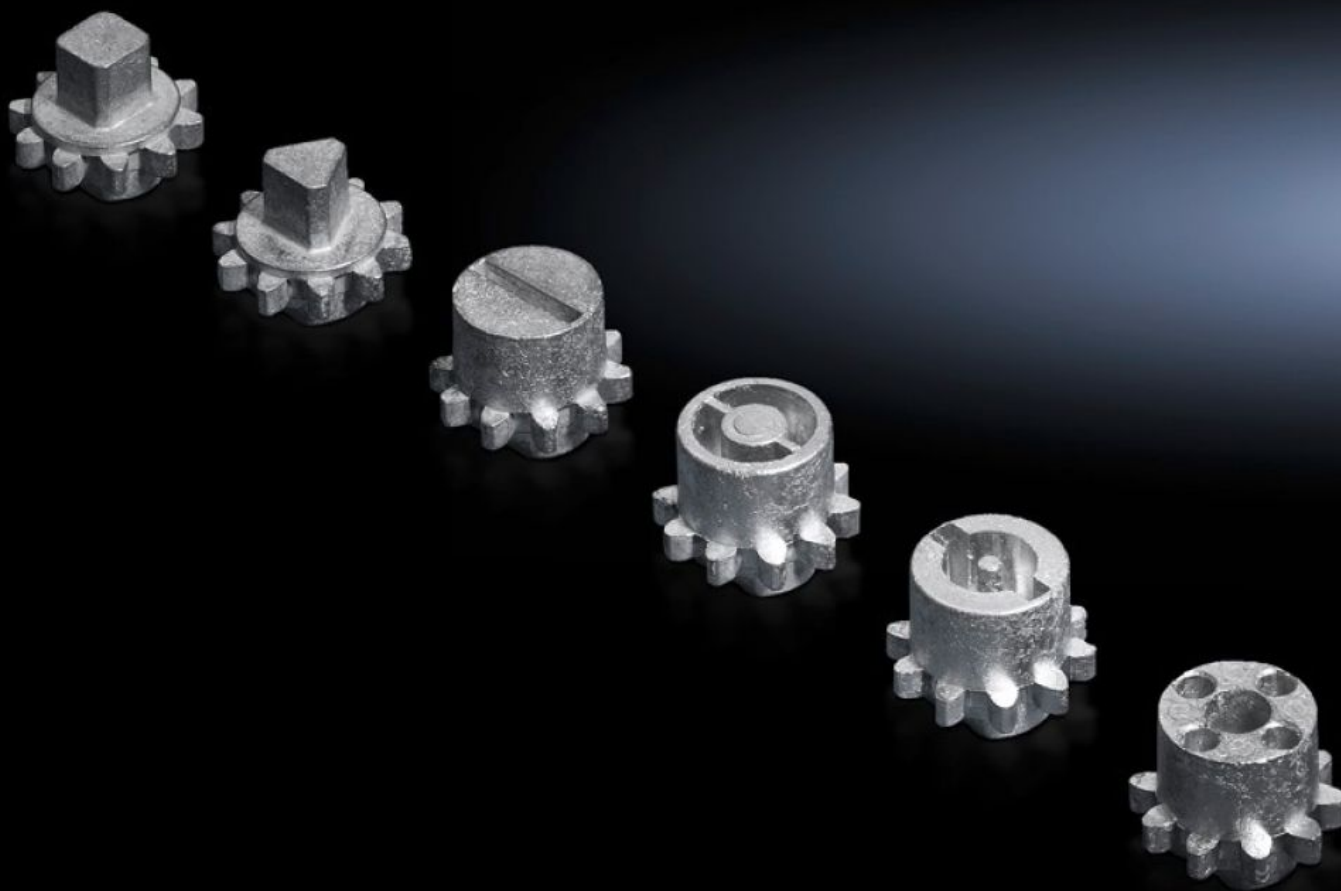
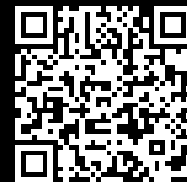


# Rittal – The System.

Faster – better – everywhere.



## VX 8618.308

### Lock insert

State: 16/08/2025 (Source: [rittal.com/ro-ro](http://rittal.com/ro-ro))

ENCLOSURES

POWER DISTRIBUTION

CLIMATE CONTROL

IT INFRASTRUCTURE

SOFTWARE & SERVICES

FRIEDHELM LOH GROUP



# VX 8618.308 - Lock insert type G

For handles and enclosures.



## Features

Model No.	VX 8618.308
Design	G
Material	Die-cast zinc
Installation in handle system	Comfort handle VX for padlock and lock inserts
Lock	Lock insert: 6.5 mm triangular (CNOMO)
To fit enclosure type	VX VX IT
Packs of	1 pc(s).
Net weight	0.014
Gross weight	0.015
Customs tariff number	83016000
EAN	4028177921894
ETIM 9	EC000743
ECLASS 8.0	27409218