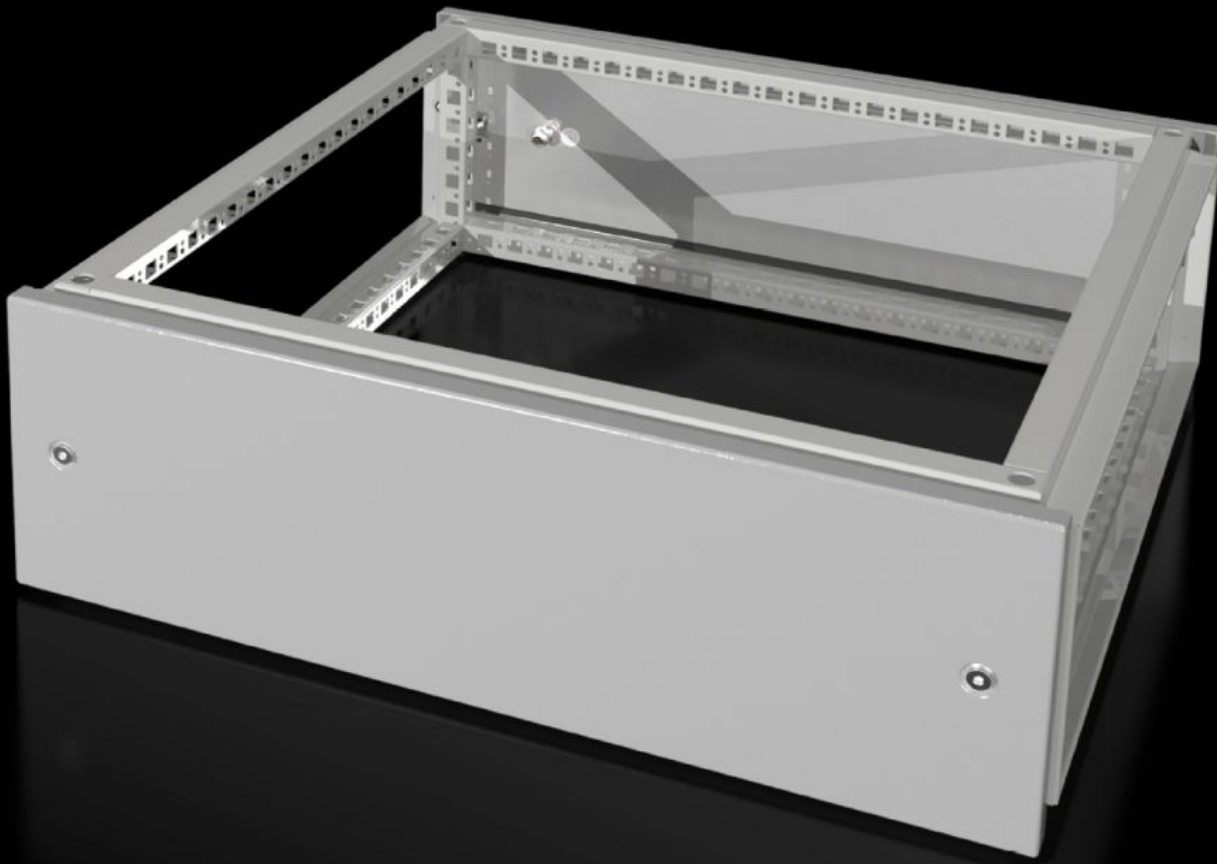


Rittal – The System.

Faster – better – everywhere.



VX 8618.500

Top-mounting module

State: 11/06/2026 (Source: rittal.com/ro-ro)

ENCLOSURES

POWER DISTRIBUTION

CLIMATE CONTROL

IT INFRASTRUCTURE

SOFTWARE & SERVICES

FRIEDHELM LOH GROUP



VX 8618.500 - Top-mounting module for VX

As a cable chamber for cable infeed from above or for power distribution with busbar systems across bayed enclosures. The cover plate supplied as standard is used to finish off at the top.



Features

Model No.	VX 8618.500
Product description	As a cable chamber for cable infeed from above or for power distribution with busbar systems across bayed enclosures. The cover plate supplied as standard is used to finish off at the top.
Material	Sheet steel, 1.5 mm
Surface finish	Spray-finished, textured paint
Colour	RAL 7035
Supply includes	Frame module 2 trim panels front/rear 8 retainers with automatic potential equalisation Assembly parts
Dimensions	Height: 200 mm
IP protection category to IEC 60529	IP 55
Type rating to UL 50E	Type 1 Type 12

Features

To fit	Enclosure type: VX Width: = 600 mm Depth: = 600 mm
Packs of	1 pc(s).
Net weight	10 kg
Gross weight	11,52 kg
Customs tariff number	94039910
ETIM 9	EC000744
ECLASS 8.0	27182405
Product description	VX Top mounting module, for WD: 600x600 mm

Approvals

Approvals	UL + C-UL (listed) UL + C-UL - FTTA
-----------	----------------------------------------