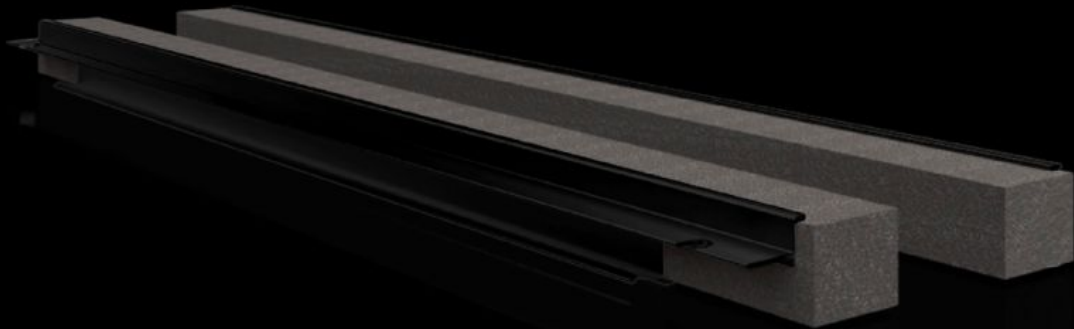


Rittal – The System.

Faster – better – everywhere.



VX 8618.813

Section for cable entry, rear

State: 14/04/2026 (Source: rittal.com/ro-ro)

ENCLOSURES

POWER DISTRIBUTION

CLIMATE CONTROL

IT INFRASTRUCTURE

SOFTWARE & SERVICES

FRIEDHELM LOH GROUP



VX 8618.813 - Section for cable entry, rear

For top-mounting on the gland plate and enclosure frame.

Features

| | |
|-----------------------|--|
| Model No. | VX 8618.813 |
| Product description | For top-mounting on the gland plate and enclosure frame. |
| Benefits | Simple assembly Full-surface support High level of sealing of cables inserted into the enclosure |
| Applications | For top-mounting on the gland plate and enclosure frame |
| Material | Hard PVC Flame-resistant, self-extinguishing Temperature resistant to +60 °C Seal: PU foam Cross-section: 30 x 25 mm |
| Supply includes | Plug-in sections, incl. foam rubber clamp strip |
| Note | You will need two pieces per cable entry point. From an enclosure width of 1000 mm, the base assembly is divided into two sections in the width. Two cable entry points (left/right) may be used. |
| To fit | Enclosure type: VX: = 1,200 mm Enclosure type: VX SE Enclosure type: CX one-piece console Enclosure type: CX pedestal |
| Packs of | 4 pc(s). |
| Net weight | 0,34 kg |
| Gross weight | 0,38 kg |
| Customs tariff number | 39269097 |
| ETIM 9 | EC002624 |
| ECLASS 8.0 | 27189265 |
| Product description | VX Section for cable entry, rear, for W: 1200 mm |