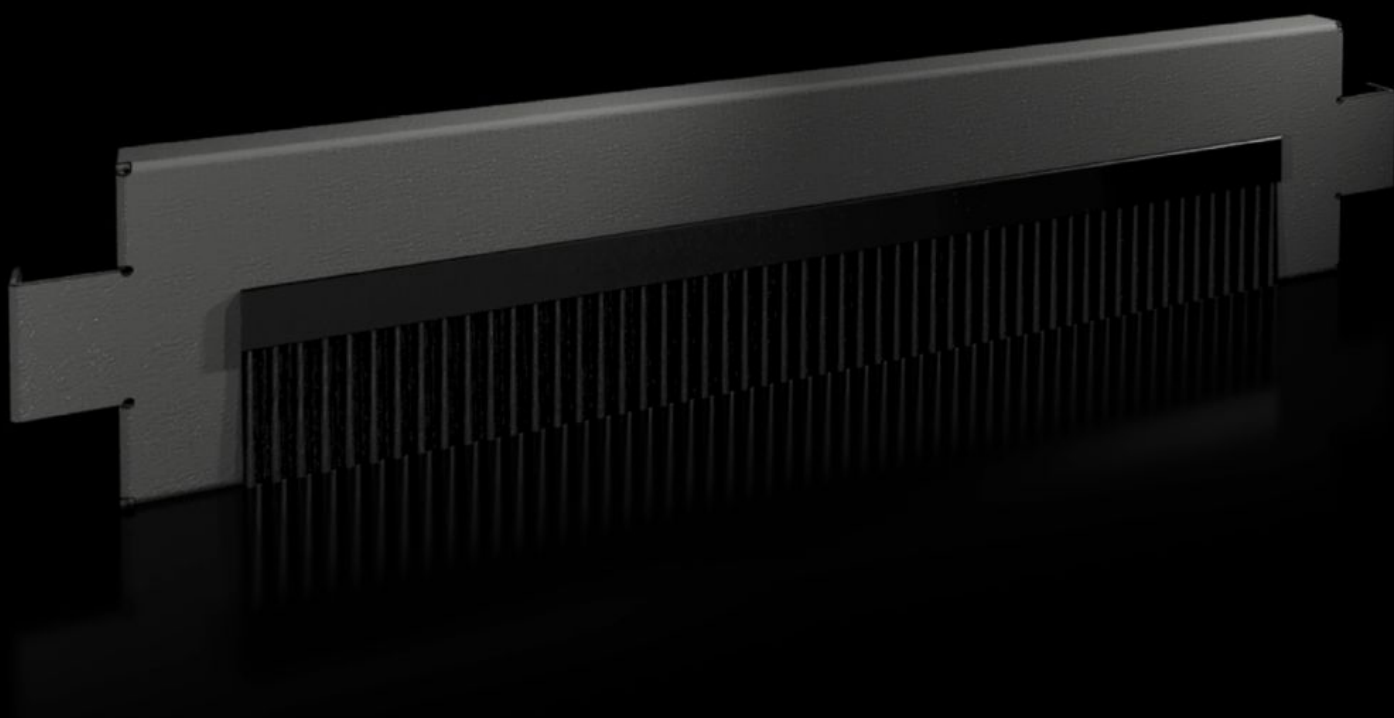


Rittal – The System.

Faster – better – everywhere.



VX 8620.092

Base/plinth trim panels with brush strip

State: 13/07/2025 (Source: [rittal.com/ro-ro](https://www.rittal.com/ro-ro))

ENCLOSURES

POWER DISTRIBUTION

CLIMATE CONTROL

IT INFRASTRUCTURE

SOFTWARE & SERVICES

FRIEDHELM LOH GROUP



VX 8620.092 - Base/plinth trim panels with brush strip for base/plinth system VX

The 100 mm high base/plinth trim panels are used in the width or depth for cable entry into the base/plinth. The trim panels may also be used in a 200 mm high base/plinth and combined with other 100 mm high trim panels.

Features

| | |
|-----------------------|---|
| Model No. | VX 8620.092 |
| Product description | For cable entry in the base/plinth. With a base/plinth height of 200 mm, one or two trim panels with brush strips may optionally be used. Thanks to the complete symmetry of the base/plinth system VX, the trim panels with brush strip may either be fitted at the front, rear or side on the base/plinth corner piece. |
| Material | Base/plinth trims: Sheet steel Brush strip: Plastic, self-extinguishing |
| Colour | RAL 9005 |
| Supply includes | Assembly parts |
| Dimensions | Height: 100 mm |
| To fit | Enclosure type: VX TX CableNet To fit width/depth: 600 mm |
| Type rating to UL 50E | Type 1, 12 |
| Weight/pack | 1,3 kg |
| Packs of | 2 pc(s). |
| Net weight | 1.1 |
| Gross weight | 1.3 |
| Customs tariff number | 94039910 |
| EAN | 4028177922457 |
| E-Number Sweden | E3465075 |

Features

| | |
|------------|----------|
| ETIM 9 | EC000721 |
| ECLASS 8.0 | 27182003 |

Approvals

| | |
|-----------|------------------|
| Approvals | UL + C-UL - FTTA |
|-----------|------------------|