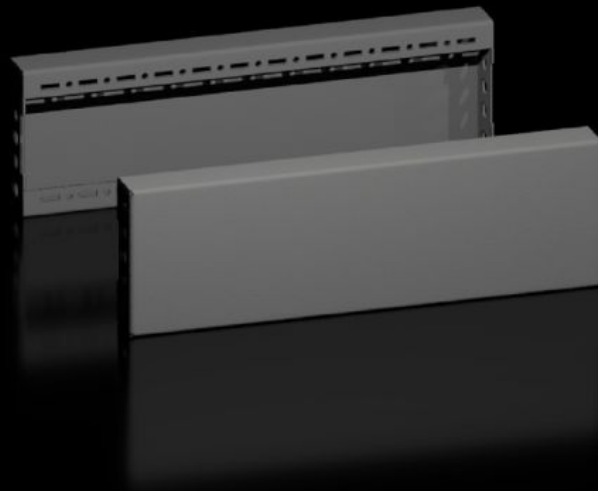


# Rittal – The System.

Faster – better – everywhere.



## VX 8660.032

## Base/plinth trim panels, side

State: 10/05/2026 (Source: [rittal.com/ro-ro](http://rittal.com/ro-ro))

ENCLOSURES

POWER DISTRIBUTION

CLIMATE CONTROL

IT INFRASTRUCTURE

SOFTWARE & SERVICES

FRIEDHELM LOH GROUP



# VX 8660.032 - Base/plinth trim panels, side for base/plinth system VX, sheet steel

To finish off a base/plinth unit at the sides and for additional stability or interior configuration of bayed base/plinths. One 200 mm high or two 100 mm high trim panels may optionally be fitted on 200 mm high base/plinths.



## Features

|                 |   |
|-----------------|---|
| Model No.       | VX 8660.032   |
| Design          | Solid   |
| Material        | Sheet steel   |
| Colour          | RAL 9005  |
| Supply includes | Assembly parts  |
| Dimensions      | Height: 100 mm  |
| To fit          | Enclosure type: VX<br>VX IT<br>VX SE<br>TX CableNet<br>TS<br>TS IT<br>TP<br>PC<br>IW<br>CX<br>Depth: = 500 mm |

# Features

---

|                               |  |
|-------------------------------|--|
| Type rating to UL 50E         | Type 1<br>Type 12  |
| Weight/pack                   | 1,51 kg  |
| Packs of                      | 2 pc(s).   |
| To fit                        | for base/plinth system VX, sheet steel   |
| Net weight                    | 1,16 kg  |
| Gross weight                  | 1,572 kg   |
| PCF per pack (cradle-to-gate) | 5.8 kg CO2 eq (Cat B)  |
| Note on PCF category          | Category B: PCF value (cradle-to-gate) based on the product weight, approximately calculated and self-declared |
| Customs tariff number         | 94039910   |
| ETIM 9                        | EC000721   |
| ETIM 8                        | EC000721   |
| ECLASS 8.0                    | 27182003   |
| Product description           | VX base/plinth trim panel, side, H: 100 mm, for D: 500 mm, sheet steel   |

# Approvals

---

|              |                 |
|--------------|-----------------|
| Explanations | PCF-declaration |
|--------------|-----------------|