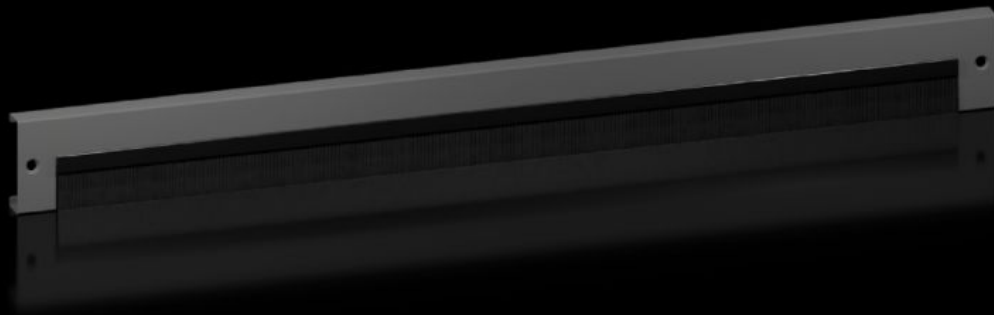


# Rittal – The System.

Faster – better – everywhere.



## VX 8660.095

# Base/plinth trim panels with brush strip

State: 29/03/2026 (Source: [rittal.com/ro-ro](http://rittal.com/ro-ro))

ENCLOSURES

POWER DISTRIBUTION

CLIMATE CONTROL

IT INFRASTRUCTURE

SOFTWARE & SERVICES

FRIEDHELM LOH GROUP



# VX 8660.095 - Base/plinth trim panels with brush strip for base/plinth system VX, sheet steel

For cable entry in the base/plinth. With a 200 mm base/plinth height, one or two trim panels with brush strip may optionally be used. Thanks to the optional trim panel attachment, the trim panels with brush strip may also be fitted at the front, rear or side of the base/plinth corner piece.

## Features

|                       |   |
|-----------------------|---|
| Model No.             | VX 8660.095   |
| Design                | with brush strip  |
| Material              | Base/plinth trims: Sheet steel<br>Brush strip: Plastic, self-extinguishing  |
| Colour                | RAL 9005  |
| Dimensions            | Height: 100 mm  |
| To fit                | Enclosure type: VX<br>VX IT<br>VX SE<br>TX CableNet<br>TS<br>TS IT<br>TP<br>PC<br>IW<br>CX<br>Width/depth: 1,200 mm |
| Packs of              | 2 pc(s).  |
| To fit                | for base/plinth system VX, sheet steel  |
| Assembly instruction  | For installation in the depth, the optional trim panel attachment is required.                                      |
| Net weight            | 2,5 kg  |
| Gross weight          | 2,554 kg  |
| Customs tariff number | 94039910  |

# Features

---

|                     |  |
|---------------------|--|
| ETIM 9              | EC000721   |
| ETIM 8              | EC000721   |
| ECLASS 8.0          | 27182003   |
| Product description | VX base/plinth trim panel with brush strip, for width/depth: 1200 mm |

---