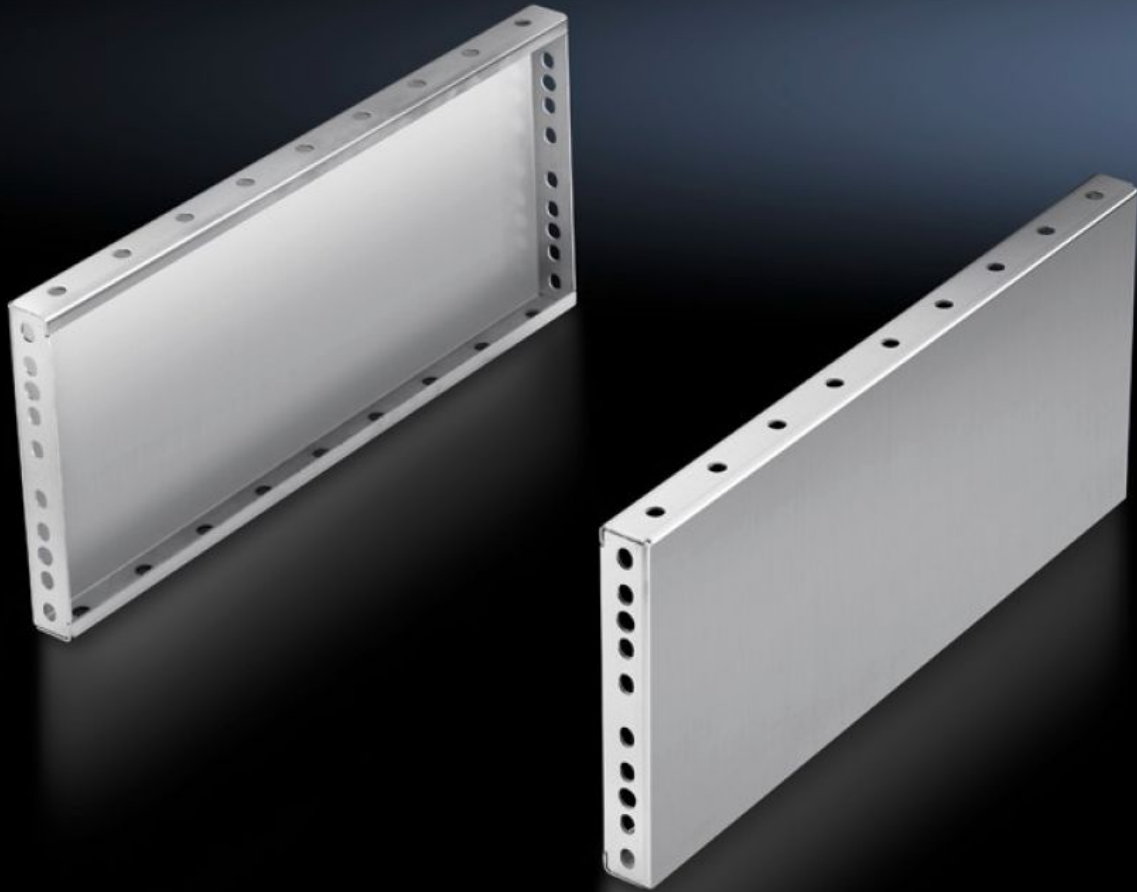


Rittal – The System.

Faster – better – everywhere.



TS 8702.040

Base/plinth trim panels, side, 200 mm

State: 13/04/2026 (Source: rittal.com/ro-ro)

ENCLOSURES

POWER DISTRIBUTION

CLIMATE CONTROL

IT INFRASTRUCTURE

SOFTWARE & SERVICES

FRIEDHELM LOH GROUP



TS 8702.040 - Base/plinth trim panels, side, 200 mm Stainless steel for base/plinth components front and rear

For mounting between the base/plinth components. At 200 mm height, two 100 mm base/plinth trims may be used.

Features

Model No.	TS 8702.040
Product description	For mounting between the base/plinth components. At 200 mm height, two 100 mm base/plinth trims may be used.
Material	Stainless steel 1.4301 (AISI 304)
Surface finish	Brushed, grain 400
Supply includes	2 base/plinth trim panels Assembly parts
Assembly instruction	Base/plinth trim panels, side, 100 mm, may be installed rotated through 90° to stabilise bayed base/plinth components. The base/plinth baying bracket is required for this purpose
Dimensions	Height: 200 mm
To fit	Enclosure type: TS: = 400 mm
Packs of	2 pc(s).
Net weight	2,486 kg
Gross weight	2,685 kg
Customs tariff number	94039910
ETIM 9	EC000721
ECLASS 8.0	27182003
Product description	TS Trim panel, sides, H: 200 mm, for W: 400 mm, Stainless steel 1.4301