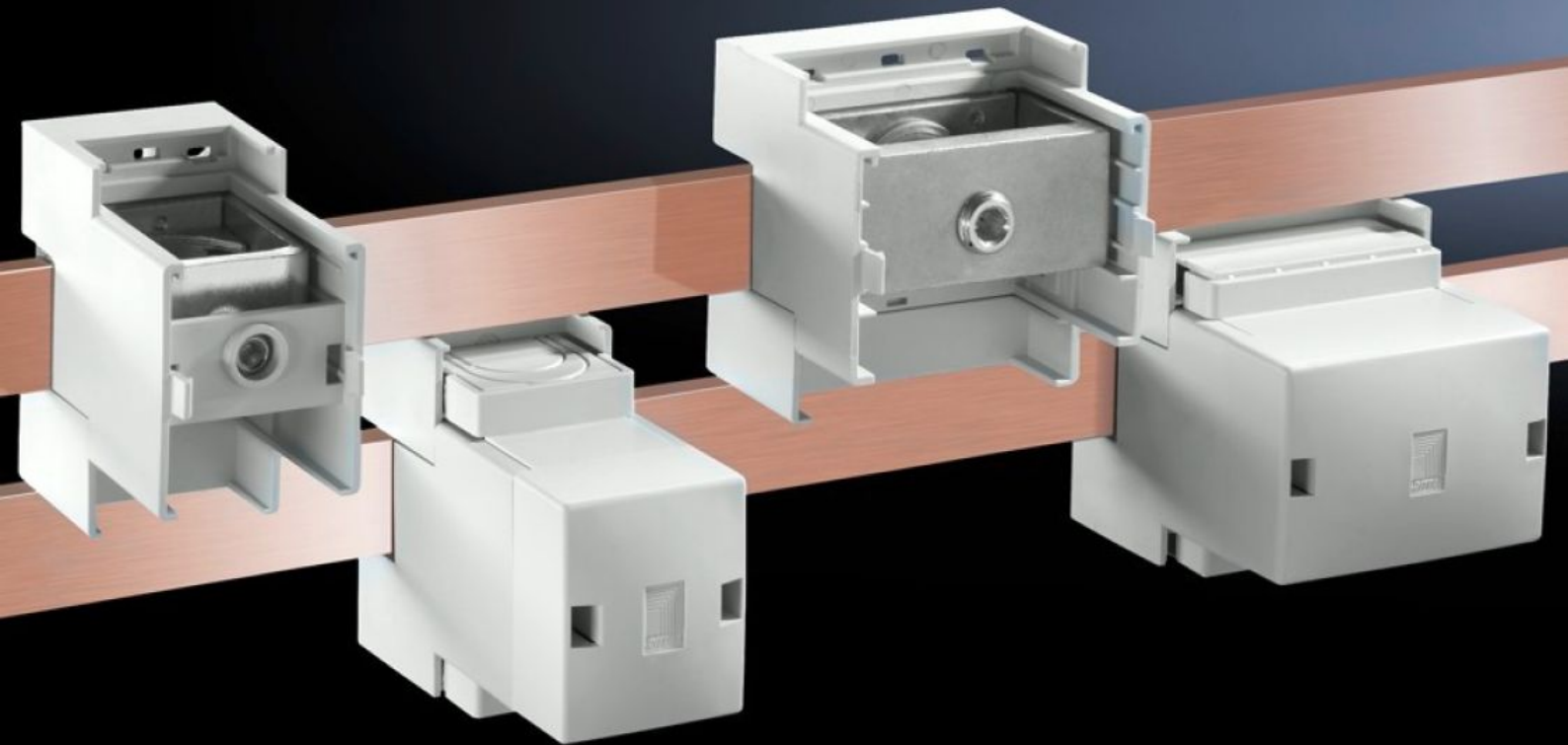


Rittal – The System.

Faster – better – everywhere.



SV 9342.321 Connection block

State: 05/07/2026 (Source: rittal.com/ro-ro)

ENCLOSURES

POWER DISTRIBUTION

CLIMATE CONTROL

IT INFRASTRUCTURE

SOFTWARE & SERVICES

FRIEDHELM LOH GROUP



SV 9342.321 - Connection block

For connecting round conductors and laminated copper bars. Suitable for busbars 12 x 5 to 30 x 10 mm and PLS 800/1600.

Features

| | |
|--|---|
| Model No. | SV 9342.321 |
| Product description | Suitable for busbars 12 x 5 to 30 x 10 mm and PLS 800/1600. |
| Material | Punched section: Polyamide Cover: ABS Fire protection corresponding to UL 94-V0 |
| Colour | RAL 7035 |
| Supply includes | 3 terminals including cover |
| Clamping area for laminated copper bars with 5 mm bar thickness (W x H) | 65 x 27 mm |
| Clamping area for laminated copper bars with 10 mm bar thickness (W x H) | 65 x 22 mm |
| Cable outlet | Top/bottom |
| Rated current max. | 1.600 A |
| Electrical ratings UL (SCCR) | 65 kA - 480 V, circuit breaker max. 1200 A, DIVQ/7 65 kA - 600 V, Fuse Class L max. 1600 A, JDDZ/7 |
| Note | With overvoltage category III, a rated operating voltage of 1,000 V (AC) is achieved. When using the terminal on 2-pole busbar systems (SV 9340.040), the terminal must be rotated through 180° for connection to the PE busbar. |
| Dimensions | Width: 85 mm Height: 88 mm |
| Packs of | 3 pc(s). |
| Net weight | 2,1 kg |

Features

| | |
|------------------------------|--|
| Gross weight | 2,197 kg |
| Copper weight (kg per piece) | 0,136 |
| Customs tariff number | 85369095 |
| ETIM 9 | EC002270 |
| ECLASS 8.0 | 27400613 |
| Product description | SV Connection block, 1600 A, 690 V, 1-pole, cable outlet top/bottom, clamping area WH: 65x22/27 mm |

Approvals

| | |
|--------------|---|
| Approvals | ABS Lloyds Register UL + C-UL (listed) |
| Explanations | Declaration of conformity Declaration of conformity UK |

Tender text

Terminal block 1-pole
Terminal block 1-pole, cable outlet top / bottom
for busbar thickness 5 / 10 mm and PLS 800 / 1600
Type of connection
Clamping area for laminated copper bars for
5 mm bar thickness: 65 x 27 mm
Clamping area for lamintate copper bars for
10 mm bar thickness: 65 x 22 mm
System:
Rittal RiLine60