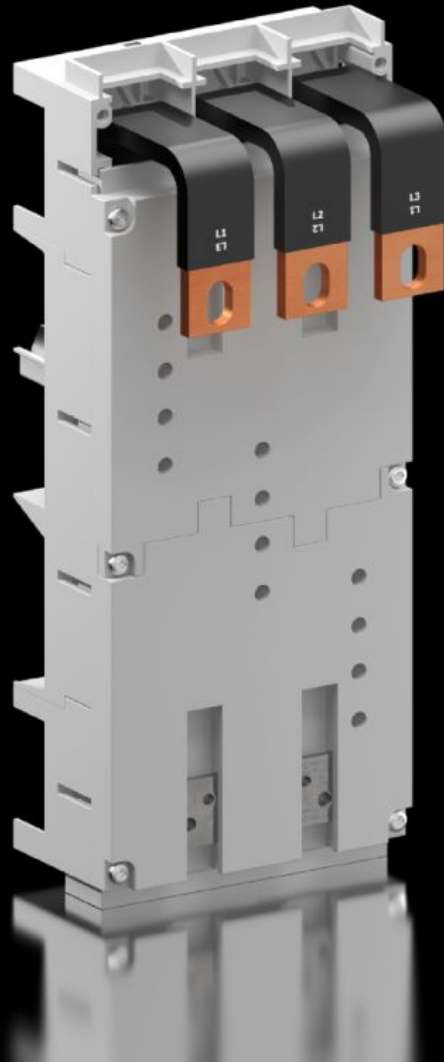


Rittal – The System.

Faster – better – everywhere.



SV 9345.730

Circuit-breaker component adaptor

State: 13/04/2026 (Source: rittal.com/ro-ro)

ENCLOSURES

POWER DISTRIBUTION

CLIMATE CONTROL

IT INFRASTRUCTURE

SOFTWARE & SERVICES

FRIEDHELM LOH GROUP



SV 9345.730 - Circuit-breaker component adaptor 3-pole

Circuit-breaker adaptor for universal, simplified assembly of circuit-breakers.



Features

Model No.	SV 9345.730
Material	Polyamide Fire protection corresponding to UL 94-V0
Colour	RAL 7035
Supply includes	Connection straps Sliding blocks
Rated current max.	400 A
Rated operating voltage	690 V, 3~
Electrical ratings UL (SCCR)	65 kA - 480 V, circuit breaker max. 400 A, DIVQ/7
Cable outlet	Bottom
For bar systems with centre-to-centre spacing	60 mm
Note	Cable outlet: Switch outlet or as outgoing cable from the switchgear The technical data may vary for UL applications
Number of poles	3-pole
Dimensions	Width: 140 mm Height: 345 mm
To fit busbars	Height: 5, 10 mm

Features

To fit manufacturer (model)	Eaton (NZM3, NZM3 UL/400 A) GE (FG400) Mitsubishi (NF400-SEW/HEW/REW) Schneider Electric (NS(X)400, NSJ400) Schrack (MC3) Siemens (VL400, VL400X UL, VL400 UL, 3VA23, 3VA63) Terasaki (E400, S400, H400, L400)
Approvals	UL
Packs of	1 pc(s).
Net weight	2,831 kg
Gross weight	2,963 kg
Copper weight (kg per piece)	1,533
Customs tariff number	85369095
ETIM 9	EC001531
ECLASS 8.0	27370304
Product description	SV Circuit-breaker component adaptor, 400 A, 690 V, 3-pole, cable outlet bottom, with connection straps

Approvals

Approvals	ABS DNV-GL Lloyds Register of Shipping UL + C-UL (listed)
Explanations	Declaration of conformity Declaration of conformity UK