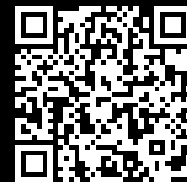


Rittal – The System.

Faster – better – everywhere.



RX 9362.140

RiLineX Fuse-switch disconnecter

State: 21/07/2025 (Source: rittal.com/ro-ro)

ENCLOSURES

POWER DISTRIBUTION

CLIMATE CONTROL

IT INFRASTRUCTURE

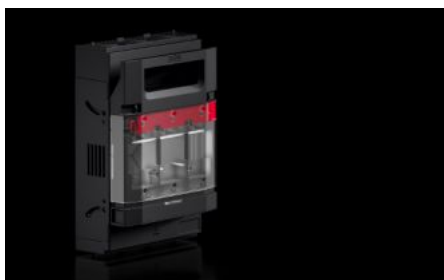
SOFTWARE & SERVICES

FRIEDHELM LOH GROUP



RX 9362.140 - RiLineX Fuse-switch disconnecter

RiLineX NH fuse-switch disconnecter in size 1 for 60 mm busbar systems. The cover can be locked and prepared for a lead seal. It also has visual fuse monitoring. Integrated measuring points on the cover ensure safe voltage testing. NH fuse-switch disconnecters have a park position to make maintenance easier. Box terminal connection to connect round conductors ranging from min. 50 to max. 150 mm². Cable outlet can be at the top or bottom, as required.



Features

Model No.	RX 9362.140
Benefits	Cover: can be locked and prepared for a lead seal Voltage test through separate opening Snap-on mounting up to 250 A and simple adjustment to busbar thickness 5/10 mm Tool-free changeover of the cable outlet Park position for simpler maintenance work High rated voltage 800 V ready All variants also available with electronic fuse monitoring
Material	Polyamide (PA 6) Fire protection corresponding to UL 94 Contact tracks: Electrolytic copper, silver-plated
Colour	RAL 9005 RAL 35745
For bar systems with centre-to-centre spacing	60 mm
Cable outlet	Top/bottom
Type of electrical connection	Box terminal
Rated operating current max.	250 A

Features

Rated operating voltage	690 V AC
For NH size	1
Test specification	IEC/DIN EN 60 947-3 DIN EN 60 269-2 (fuse inserts)
Dimensions	Width: 182 mm Height: 298 mm Depth: 117 mm
Operating temperature range	-5 °C...35 °C
Storage temperature range	-25 °C...70 °C
To fit busbars	15 x 5/10 20 x 5/10 30 x 5/10
To fit busbar system	RiLineX RiLine60
Number of poles	3-pole
Utilisation category	AC-23B (400 V/100 A) AC-22B (500 V/100 A) DC-22B (250 V/100 A) DC-21B (440 V/100 A)
Contamination level	3
IP protection category to IEC 60 529	IP 2XB
Power dissipation (max.)	51 W
Packs of	1 pc(s).
Net weight	2.607
Gross weight	2.781
Copper weight (kg per piece)	0.8
Customs tariff number	85369095
ETIM 9	EC001040

Approvals

Explanations

Declaration of conformity