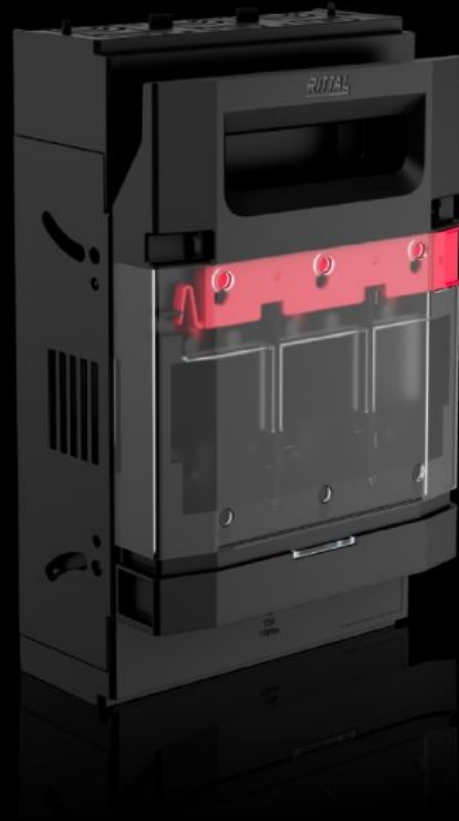


Rittal – The System.

Faster – better – everywhere.



RX 9362.422

RiLineX NH fuse-switch disconnecter

State: 21/05/2026 (Source: rittal.com/ro-ro)

ENCLOSURES

POWER DISTRIBUTION

CLIMATE CONTROL

IT INFRASTRUCTURE

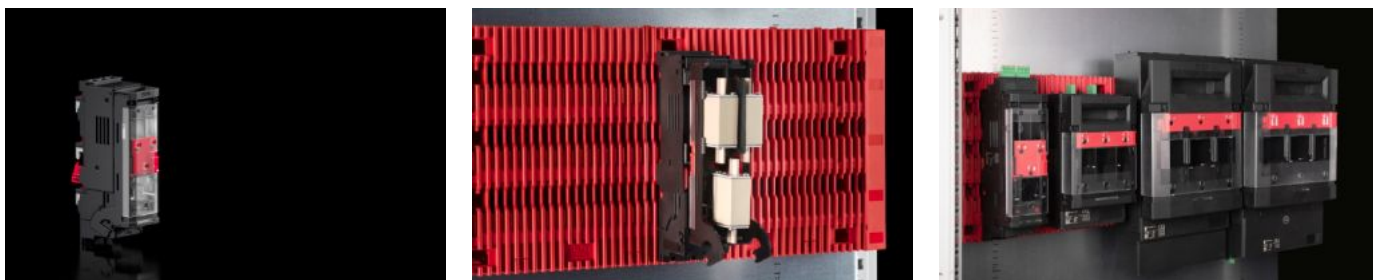
SOFTWARE & SERVICES

FRIEDHELM LOH GROUP



RX 9362.422 - RiLineX NH fuse-switch disconnecter

RiLineX NH fuse-switch disconnecter in size 000 for 60 mm busbar systems. The cover can be locked and prepared for a lead seal. It also has visual fuse monitoring. Integrated measuring points on the cover ensure safe voltage testing. NH fuse-switch disconnecters have a park position to make maintenance easier. Box terminal connection to connect round conductors ranging from min. 1.5 to max. 50 mm². Cable outlet at the top.



Features

Model No.	RX 9362.422
Design	For 60 mm busbar systems
Benefits	Cover: can be locked and prepared for a lead seal Voltage test through separate opening Snap-on mounting up to 250 A and simple adjustment to busbar thickness 5/10 mm Tool-free changeover of the cable outlet Park position for simpler maintenance work All variants also available with electronic fuse monitoring
Material	Polyamide (PA 6) Fire protection corresponding to UL 94 Contact tracks: Electrolytic copper, silver-plated
Colour	RAL 9005 RAL 35745
For bar systems with centre-to-centre spacing	60 mm
Cable outlet	Top
Type of electrical connection	Box terminal
Fuse inserts	NH 000

Features

Rated insulation voltage U_i	1.000 V
Rated current max.	125 A
Rated operating voltage	690 V AC
For NH size	000
Test specification	IEC/DIN EN 60 947-3 DIN EN 60 269-2 (fuse inserts)
Dimensions	Width: 53 mm Height: 212 mm Depth: 103 mm
Operating temperature range	-5 °C...35 °C
Storage temperature range	-25 °C...70 °C
To fit busbars	15 x 5/10 20 x 5/10 30 x 5/10
To fit busbar system	RiLineX RiLine60
Number of poles	3-pole
Utilisation category	AC-23B (400 V/100 A) AC-22B (500 V/100 A) AC-21B (690 V/100 A) DC-22B (250 V/100 A)
Contamination level	3
IP protection category to IEC 60 529	IP 2XB
Fire load	10,84 MJ/m ²
Connection of round conductors, fine wire without wire end ferrule	1.5 - 16 mm ²
Connection of round conductors, fine wire with wire end ferrule	1.5 - 50 mm ²
Heat loss max.	36 W
Heat loss per fuse insert (max.)	9 W

Features

Packs of	1 pc(s).
Net weight	0,65 kg
Gross weight	0,706 kg
Copper weight (kg per piece)	0,475
PCF per pack (cradle-to-gate)	4.53
Customs tariff number	85369095
ETIM 9	EC001040
Product description	RiLineX NH fuse-switch disconnecter in size 000 for 60 mm busbar systems. The cover can be locked and prepared for a lead seal. It also has visual fuse monitoring. Integrated measuring points on the cover ensure safe voltage testing. NH fuse-switch disconnecters have a park position to make maintenance easier. Box terminal connection to connect round conductors ranging from min. 1.5 to max. 50 mm ² . Cable outlet at the top.

Approvals

Approvals	CQC-CCC
Explanations	Declaration of conformity PCF-declaration

Tender text

RiLineX NH fuse-switch disconnecter (size 000)

NH fuse-switch disconnecter for
60 mm busbar systems.

The device can be adjusted to rail thickness without tools.

Other properties include sealability,

Voltage test via separate openings,

Parking position for the cover and lockability with

padlocks in the open position (service case).

Rated voltage 690 V AC.

Product information

Number of poles: 3

Busbar dimensions: 15/20/30 mm

Busbar dimensions: 5/10 mm

Rated current: 125 A

Connection: 1,5 - 50 mm²

Type of electrical connection: Box terminal

Cable outlet: top

Dimensions: 53 mm x 212 mm x 103 mm (BxHxT)

Manufacturer: Rittal GmbH & Co. KG

Type: 9362422