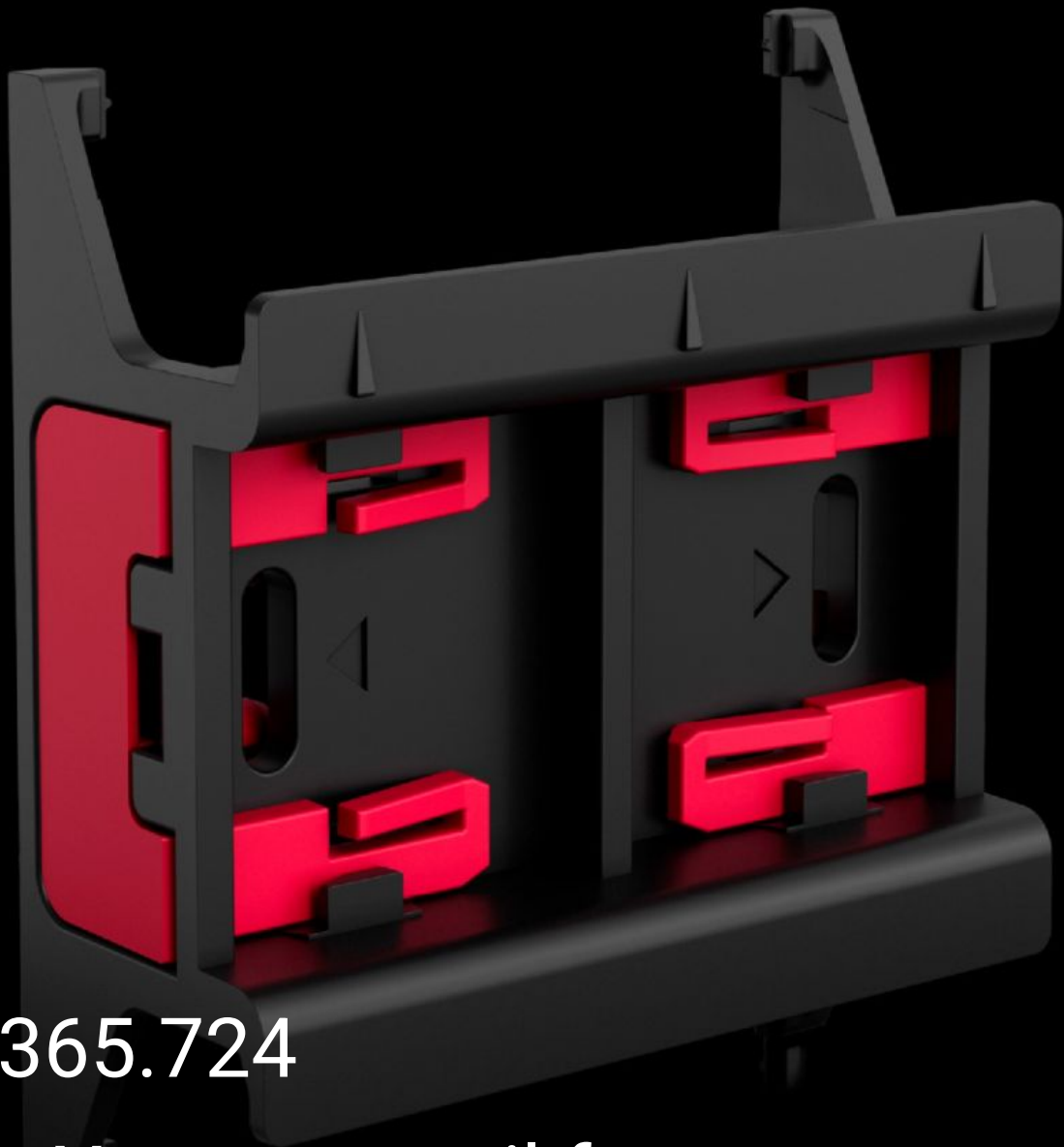


**Rittal – The System.**

Faster – better – everywhere.



**RX 9365.724**

**RiLineX support rail for component adaptor**

State: 22/05/2026 (Source: [rittal.com/ro-ro](http://rittal.com/ro-ro))

ENCLOSURES

POWER DISTRIBUTION

CLIMATE CONTROL

IT INFRASTRUCTURE

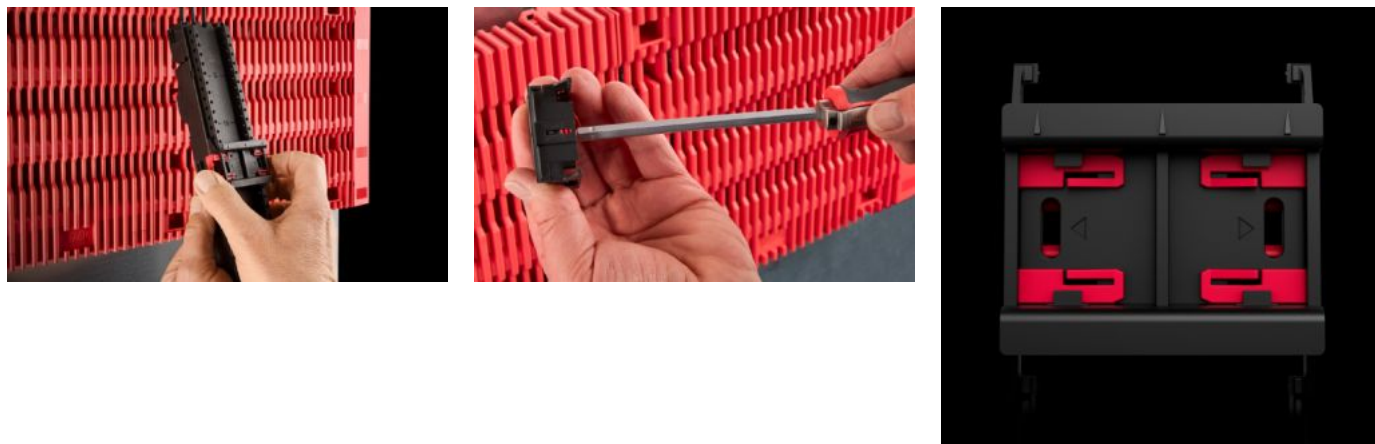
SOFTWARE & SERVICES



FRIEDHELM LOH GROUP

# RX 9365.724 - RiLineX support rail for component adaptor

RiLineX support rails for component adaptors in width 45 mm for 60 mm busbar systems. For mounting top-mounted equipment with snap fastening on component adaptors and component supports.



## Features

Model No.	RX 9365.724
Design	with locking clip
Material	Polyamide (PA 6) Fire protection corresponding to UL 94
Colour	RAL 9005 RAL 35745
To fit Model No.	9360710 9360720 9360730
Dimensions	Width: 45 mm Height: 10 mm
Packs of	8 pc(s).
Net weight	0,064 kg
Gross weight	0,095 kg
PCF per pack (cradle-to-gate)	0.43
Customs tariff number	39269097

# Features

---

ETIM 9

EC001285

---

Product description

RiLineX support rails for component adaptors in width 45 mm for 60 mm busbar systems. For mounting top-mounted equipment with snap fastening on component adaptors and component supports.

# Approvals

---

Explanations

Declaration of conformity  
PCF-declaration