

Rittal – The System.

Faster – better – everywhere.



RX 9365.750 RiLineX expansion block

State: 07/07/2026 (Source: rittal.com/ro-ro)

ENCLOSURES

POWER DISTRIBUTION

CLIMATE CONTROL

IT INFRASTRUCTURE

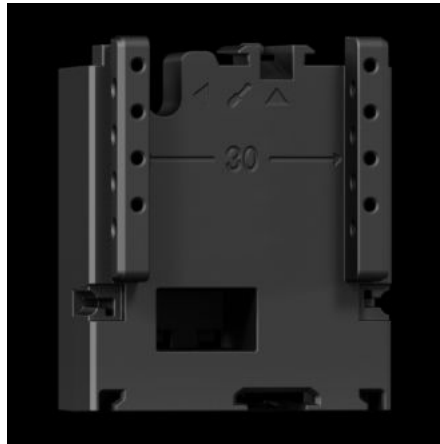
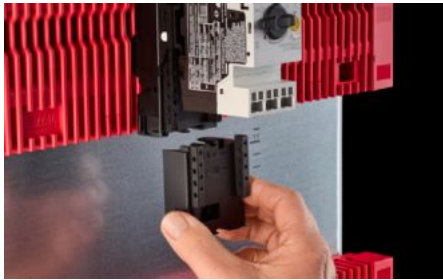
SOFTWARE & SERVICES

FRIEDHELM LOH GROUP



RX 9365.750 - RiLineX expansion block for component adaptors and component supports

RiLineX extension block, width 45 mm, to extend the component adaptor by 60 mm for busbar systems.



Features

Model No.	RX 9365.750
Material	Polyamide (PA 6) Fire protection corresponding to UL 94
Colour	RAL 9005
To fit Model No.	9360710 9360720 9360730 9360705
Dimensions	Width: 45 mm Height: 60 mm
Packs of	8 pc(s).
Net weight	0,232 kg
Gross weight	0,247 kg
PCF per pack (cradle-to-gate)	1.59
Customs tariff number	39269097
ETIM 9	EC002270

Features

Product description

RiLineX extension block, width 45 mm, to extend the component adaptor by 60 mm for busbar systems.

Approvals

Explanations

Declaration of conformity
PCF-declaration