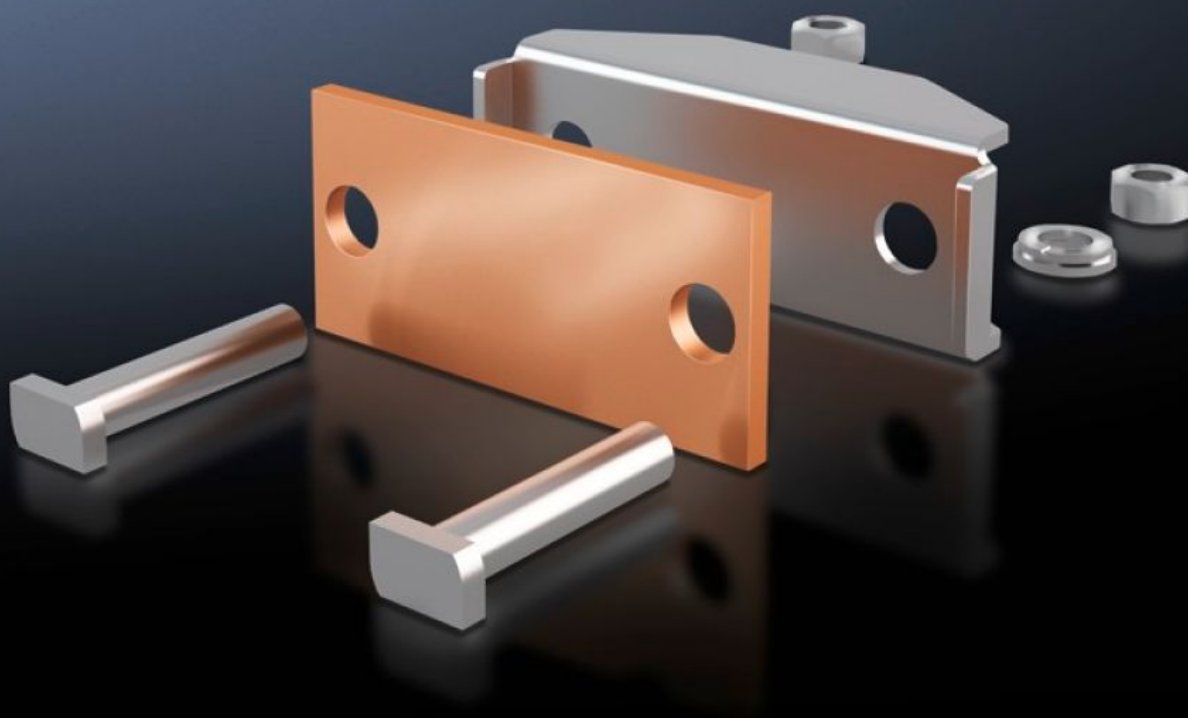
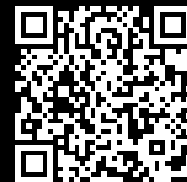


Rittal – The System.

Faster – better – everywhere.



SV 9640.340 Connection plate

State: 16/08/2025 (Source: [rittal.com/ro-ro](https://www.rittal.com/ro-ro))

ENCLOSURES

POWER DISTRIBUTION

CLIMATE CONTROL

IT INFRASTRUCTURE

SOFTWARE & SERVICES

FRIEDHELM LOH GROUP



SV 9640.340 - Connection plate for laminated copper bars

For the connection of laminated flat copper bars.

Features

| | |
|---|---|
| Model No. | SV 9640.340 |
| Product description | For the connection of laminated flat copper bars. |
| Material | Connection plate: E-Cu Thrust piece: Stainless steel |
| Supply includes | Assembly parts |
| To fit busbars | Maxi-PLS 45 S/45 |
| Clamping area for laminated copper bars (W x H) | 63 x 20 mm |
| Packs of | 3 pc(s). |
| Net weight | 1.455 |
| Gross weight | 1.477 |
| Copper weight (kg per piece) | 0.19 |
| Customs tariff number | 73269098 |
| EAN | 4028177238688 |
| ETIM 9 | EC002498 |
| ECLASS 8.0 | 27379201 |

Approvals

| | |
|--------------|---|
| Approvals | UL + C-UL (listed) |
| Explanations | Declaration of conformity Declaration of conformity UK |