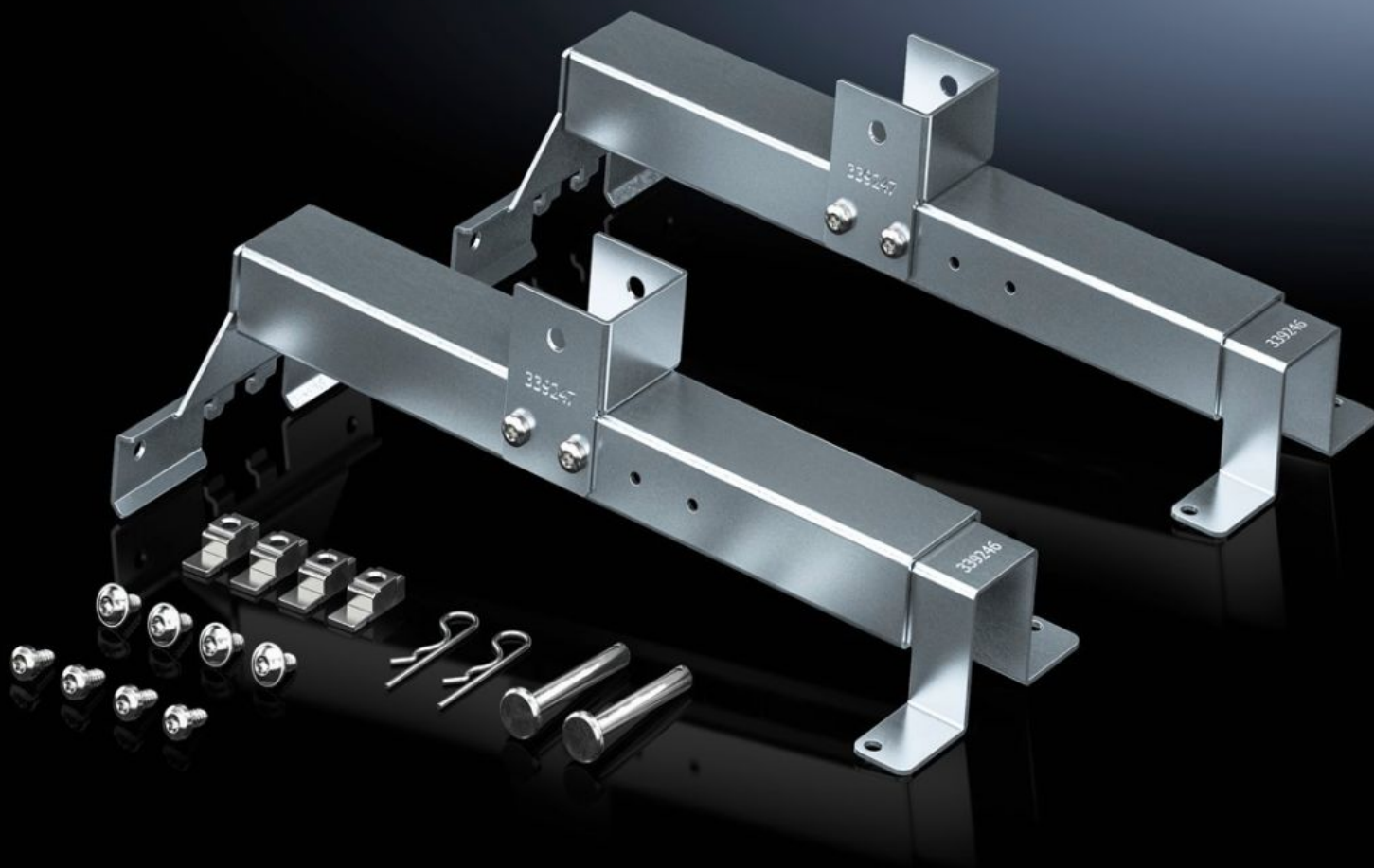
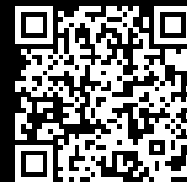


Rittal – The System.

Faster – better – everywhere.



SV 9666.732

Depth stay

State: 29/08/2025 (Source: rittal.com/ro-ro)

ENCLOSURES

POWER DISTRIBUTION

CLIMATE CONTROL

IT INFRASTRUCTURE

SOFTWARE & SERVICES

FRIEDHELM LOH GROUP



SV 9666.732 - Depth stay for installation kit ISV

For attaching the ISV installation kit in the enclosure.

Features

Model No.	SV 9666.732
Product description	For attaching the installation kit in the enclosure.
Material	Sheet steel
Surface finish	Zinc-plated
Supply includes	Assembly parts
To fit Model No.	9666.902 9666.912 9666.922 9666.932
To fit	Enclosure type: VX Depth: = 400 mm = 500 mm = 600 mm
Packs of	2 pc(s).
Net weight	3.04
Gross weight	3.04
PCF per pack (cradle-to-gate)	12.3 kg CO2 eq (Cat B)
Note on PCF category	Category B: PCF value (cradle-to-gate) based on the product weight, approximately calculated and self-declared
Customs tariff number	73269098
EAN	4028177923256
ETIM 9	EC002270
ECLASS 8.0	27400613