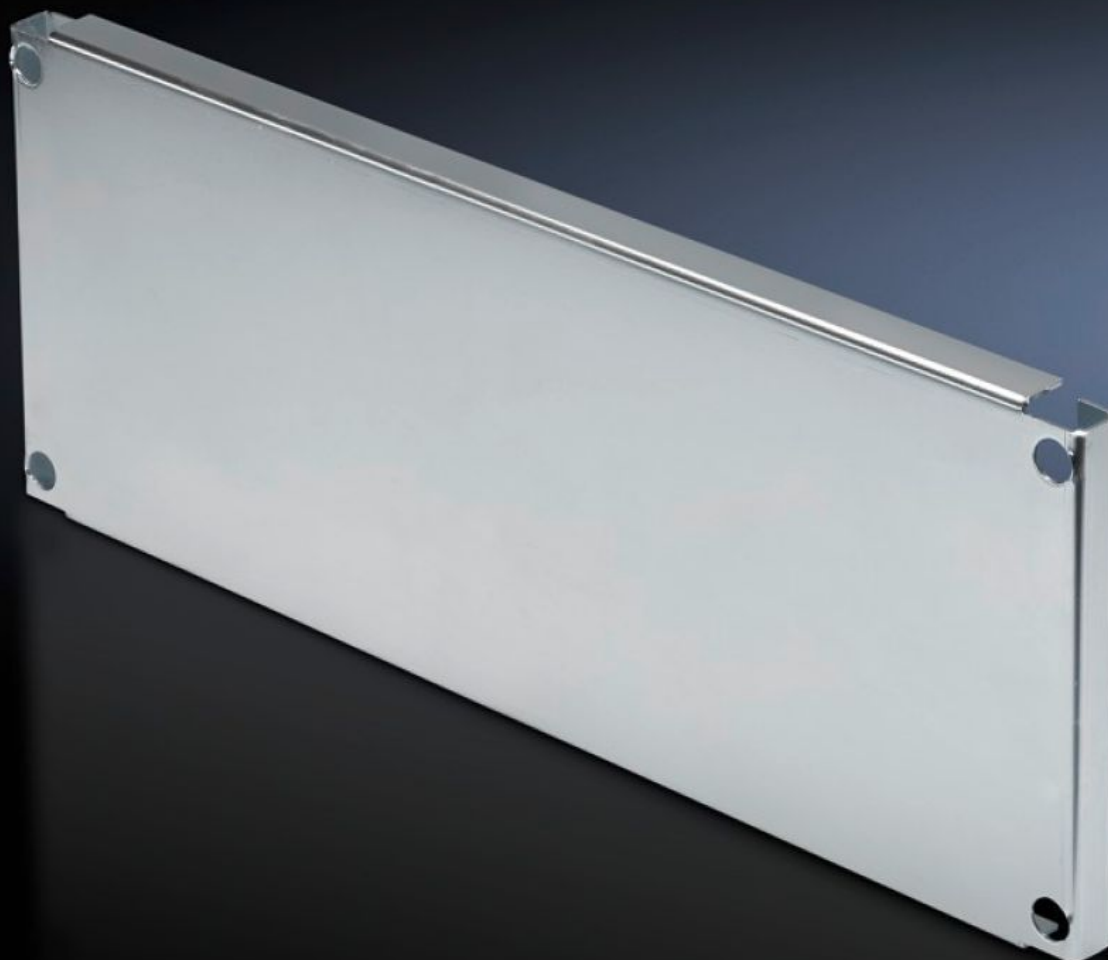


# Rittal – The System.

Faster – better – everywhere.



## SV 9673.661

## Partial mounting plates

State: 08/07/2025 (Source: [rittal.com/ro-ro](http://rittal.com/ro-ro))

ENCLOSURES

POWER DISTRIBUTION

CLIMATE CONTROL

IT INFRASTRUCTURE

SOFTWARE & SERVICES

FRIEDHELM LOH GROUP



# SV 9673.661 - Partial mounting plates for compartment side panel modules (internal compartmentalisation)

With or without duct, for direct attachment to the functional space side panel modules.



## Features

Model No.	SV 9673.661
Design	Without duct
Product description	For direct attachment to the compartment side panel modules for internal compartmentalisation. Universal interior installation with switchgear and controlgear. Creation of additional mounting levels. In combination with compartment dividers and side panel modules, internal compartmentalisation in accordance with Form 2, 3 or 4 is possible.
Material	Sheet steel, 2 mm
Surface finish	Zinc-plated
Supply includes	Angle brackets and assembly parts
For compartment height	150 mm
Dimensions	Width: 502 mm Height: 143 mm
To fit	Width: = 600 mm
Packs of	1 pc(s).
Net weight	1.86
Gross weight	2.06

# Features

Customs tariff number	73269098
EAN	4028177544116
ETIM 9	EC002525
ECLASS 8.0	27400613