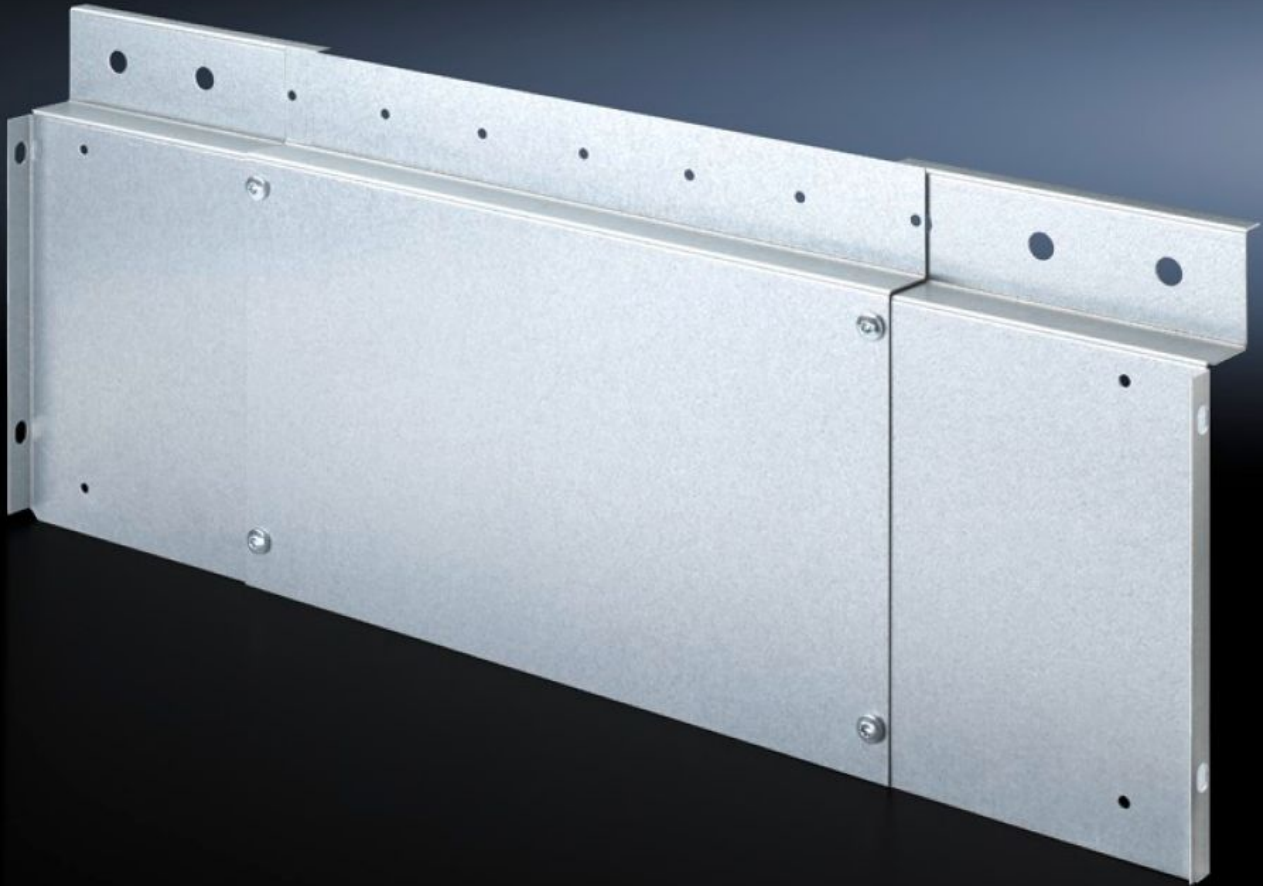


Rittal – The System.

Faster – better – everywhere.



SV 9674.560

Wiring trim panel

State: 24/08/2025 (Source: rittal.com/ro-ro)

ENCLOSURES

POWER DISTRIBUTION

CLIMATE CONTROL

IT INFRASTRUCTURE

SOFTWARE & SERVICES

FRIEDHELM LOH GROUP



SV 9674.560 - Wiring trim panel

Wiring system for Ri4Power with internal compartmentalisation

Features

Model No.	SV 9674.560
Product description	Inner front cover of the main busbar system with the option of mounting a wiring channel W x D 40 x 20 mm. Suitable for use in Ri4Power switchgear with 300 mm high front trim panels. Horizontal cable routing occurs behind the front trim panels.
Material	Sheet steel
Surface finish	Zinc-plated
Supply includes	Assembly parts
Note	For vertical cable routing, mounting brackets for compartment dividers and circuit-breaker support rails enable the installation of a wiring channel, thanks to pre-punched cut-outs.
To fit	Width: = 800 mm = 1,000 mm = 1,200 mm
Packs of	1 pc(s).
Net weight	2.4
Gross weight	2.46
Customs tariff number	73269098
EAN	4028177697317
ETIM 9	EC002617
ECLASS 8.0	27142423