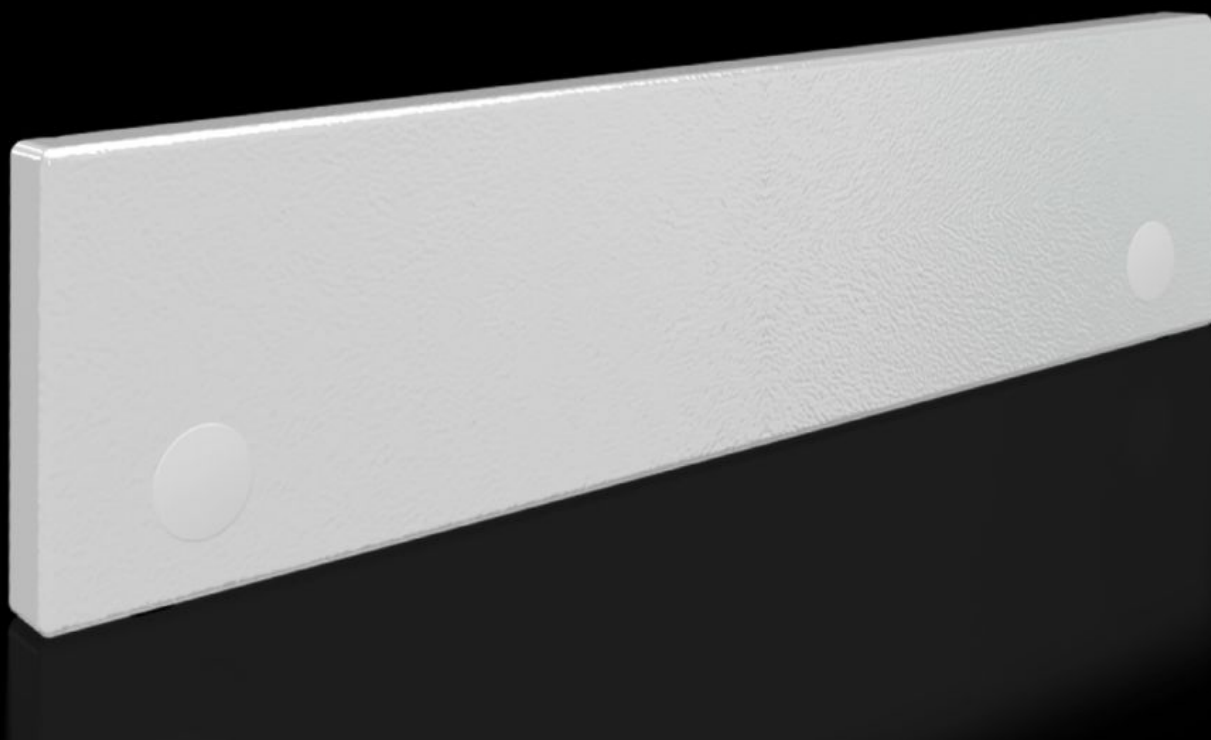


Rittal – The System.

Faster – better – everywhere.



SV 9682.314

Front trim panel, top, solid

State: 07/02/2026 (Source: rittal.com/ro-ro)

ENCLOSURES

POWER DISTRIBUTION

CLIMATE CONTROL

IT INFRASTRUCTURE

SOFTWARE & SERVICES

FRIEDHELM LOH GROUP



SV 9682.314 - Front trim panel, top, solid for VX

To finish off at the top when using partial doors.



Features

Model No.	SV 9682.314
Design	solid
Product description	To finish off the modular front design at the top when using partial doors. The front trim panels may be removed from the outside by unscrewing. The cross member required for mounting is included with the supply of the mounted partial doors.
Material	Sheet steel, 1.5 mm
Surface finish	Textured paint
Colour	RAL 7035
Supply includes	Assembly parts
Dimensions	Height: 100 mm
To fit	Width: = 400 mm
Packs of	1 pc(s).
Net weight	1
Gross weight	1.02
PCF per pack (cradle-to-gate)	3.8 kg CO2 eq (Cat B)
Note on PCF category	Category B: PCF value (cradle-to-gate) based on the product weight, approximately calculated and self-declared
Customs tariff number	83024200

Features

EAN	4028177929630
ETIM 9	EC000456
ECLASS 8.0	27142423

Approvals

Approvals	UL + C-UL (listed) UL + C-UL - FTТА
Explanations	Declaration of conformity UK