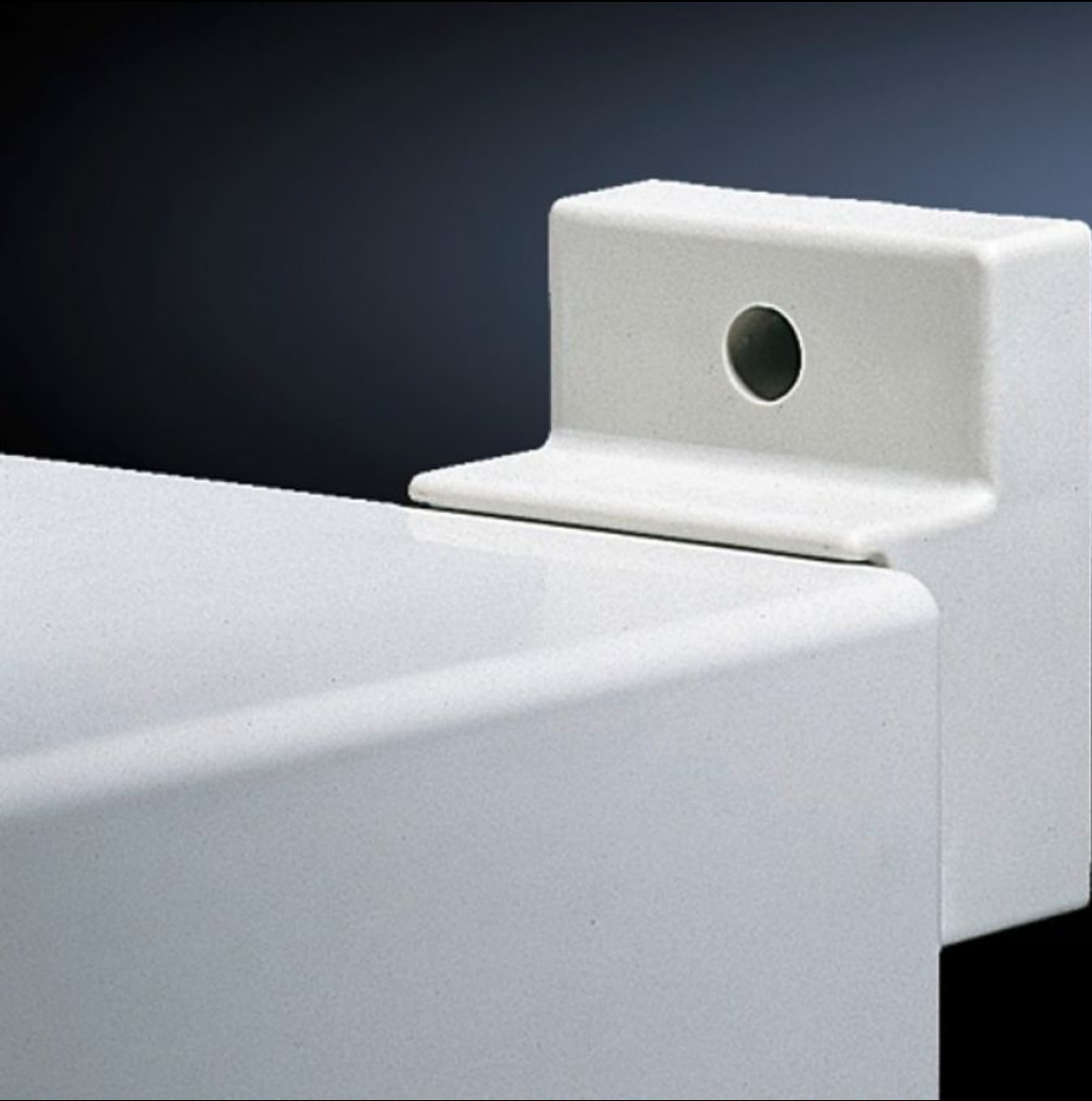


Rittal – The System.

Faster – better – everywhere.



KS 1483.010

Wall mounting bracket

State: 07/05/2026 (Source: rittal.com/rs-sr)

ENCLOSURES

POWER DISTRIBUTION

CLIMATE CONTROL

IT INFRASTRUCTURE

SOFTWARE & SERVICES

FRIEDHELM LOH GROUP



KS 1483.010 - Wall mounting bracket for KS

For attaching to the enclosure from the outside. Distance from wall 30 mm.

Features

Model No.	KS 1483.010
Product description	For attachment to the wall, only possible from the outside of the enclosure.
Material	Fibreglass-reinforced polyamide
Colour	Similar to RAL 7035
Supply includes	Assembly parts for mounting on the enclosure
Installation options	For attaching to the enclosure from the outside
To fit	Enclosure type: KS
Packs of	4 pc(s).
Net weight	0,16 kg
Gross weight	0,228 kg
Customs tariff number	73269098
ETIM 9	EC002625
ETIM 8	EC002625
ECLASS 8.0	27189234
Product description	KS Wall mounting bracket, for KS, similar RAL 7035