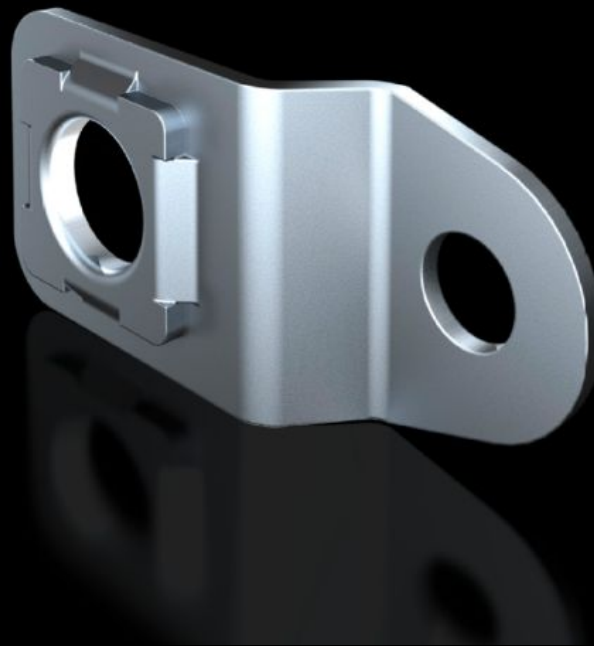


# Rittal – The System.

Faster – better – everywhere.



## SZ 1590.010

# Wall mounting bracket

State: 12/05/2026 (Source: [rittal.com/rs-sr](http://rittal.com/rs-sr))

ENCLOSURES

POWER DISTRIBUTION

CLIMATE CONTROL

IT INFRASTRUCTURE

SOFTWARE & SERVICES

FRIEDHELM LOH GROUP



# SZ 1590.010 - Wall mounting bracket for AX sheet steel, KX sheet steel, AX IT, EL

For the attachment of AX and KX sheet steel enclosures.

## Features

Model No.	SZ 1590.010
Product description	For the attachment of AX and KX sheet steel enclosures.
Benefits	Screw-fastened directly from the rear with a self-tapping screw into the enclosure eyelet
Material	Sheet steel, zinc-plated
Supply includes	Assembly parts
Wall distance	10 mm
To fit	Enclosure type: AX sheet steel KX sheet steel AX wall-mounted enclosure, 3-part
Type rating to UL 50E	Type 1 Type 3R Type 4 Type 12
Packs of	4 pc(s).
Net weight	0,132 kg
Gross weight	0,168 kg
PCF per pack (cradle-to-gate)	0.5 kg CO2 eq (Cat B)
Note on PCF category	Category B: PCF value (cradle-to-gate) based on the product weight, approximately calculated and self-declared
Customs tariff number	83025000
ETIM 9	EC002625
ETIM 8	EC002625
ECLASS 8.0	27189234

# Features

---

Product description	SZ Wall mounting bracket, for AX and KX, sheet steel, wall distance: 10 mm
---------------------	---

# Approvals

---

Approvals	DNV UL + C-UL - FTFA
-----------	-------------------------