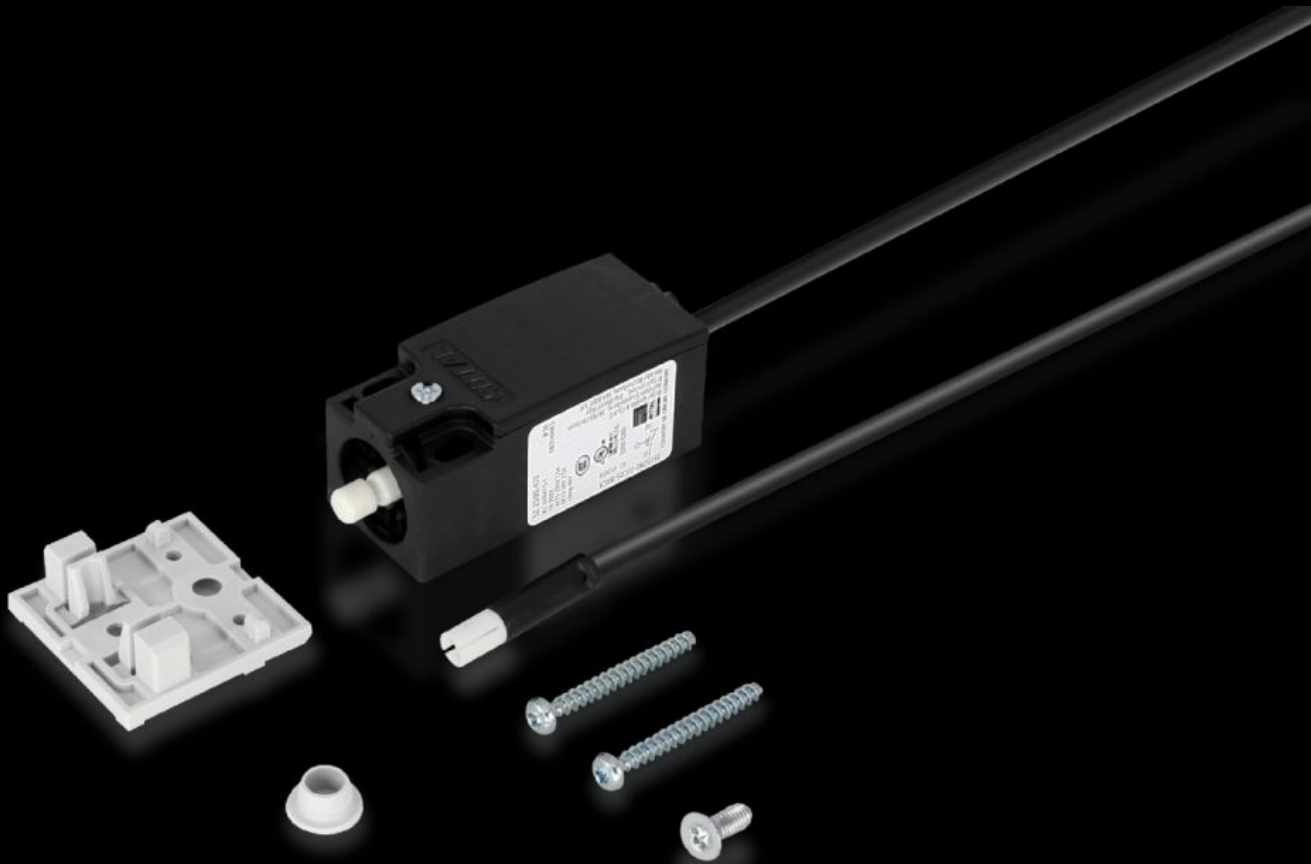


**Rittal – The System.**

Faster – better – everywhere.



# SZ 2500.470

## Door-operated switch

State: 22/06/2026 (Source: [rittal.com/rs-sr](http://rittal.com/rs-sr))

ENCLOSURES

POWER DISTRIBUTION

CLIMATE CONTROL

IT INFRASTRUCTURE

SOFTWARE & SERVICES

FRIEDHELM LOH GROUP



# SZ 2500.470 - Door-operated switch for LED system light

For simple, time-saving connection of the LED system light.

## Features

Model No.	SZ 2500.470
Design	With connection cable
Product description	For time-saving and simple installation of the LED system light.
Colour	Black
Supply includes	Assembly parts
Cross-section	0,75 mm <sup>2</sup>
Length	800 mm
AWG	AWG 18
Standards	Power supply cords: CYJV2 Door-operated switch: NKCR
Dimensions	Width: 31 mm Height: 78 mm Depth: 30 mm Length: 800 mm
Electrical connection	2.5 A
Rated operating voltage	230 V (AC) 24 V (DC)
Packs of	1 pc(s).
Net weight	0,1 kg
Gross weight	0,11 kg
Customs tariff number	85365019
ETIM 9	EC002626
ETIM 8	EC002626
ECLASS 8.0	27189266

# Features

---

Product description	SZ Door-operated switch, with connection wire, L: 800 mm, black, UL
---------------------	---

# Approvals

---

Approvals	CQC CQC-CCC UL + C-UL (listed)
-----------	--------------------------------------

---

Explanations	Declaration of conformity Declaration of conformity UK
--------------	---