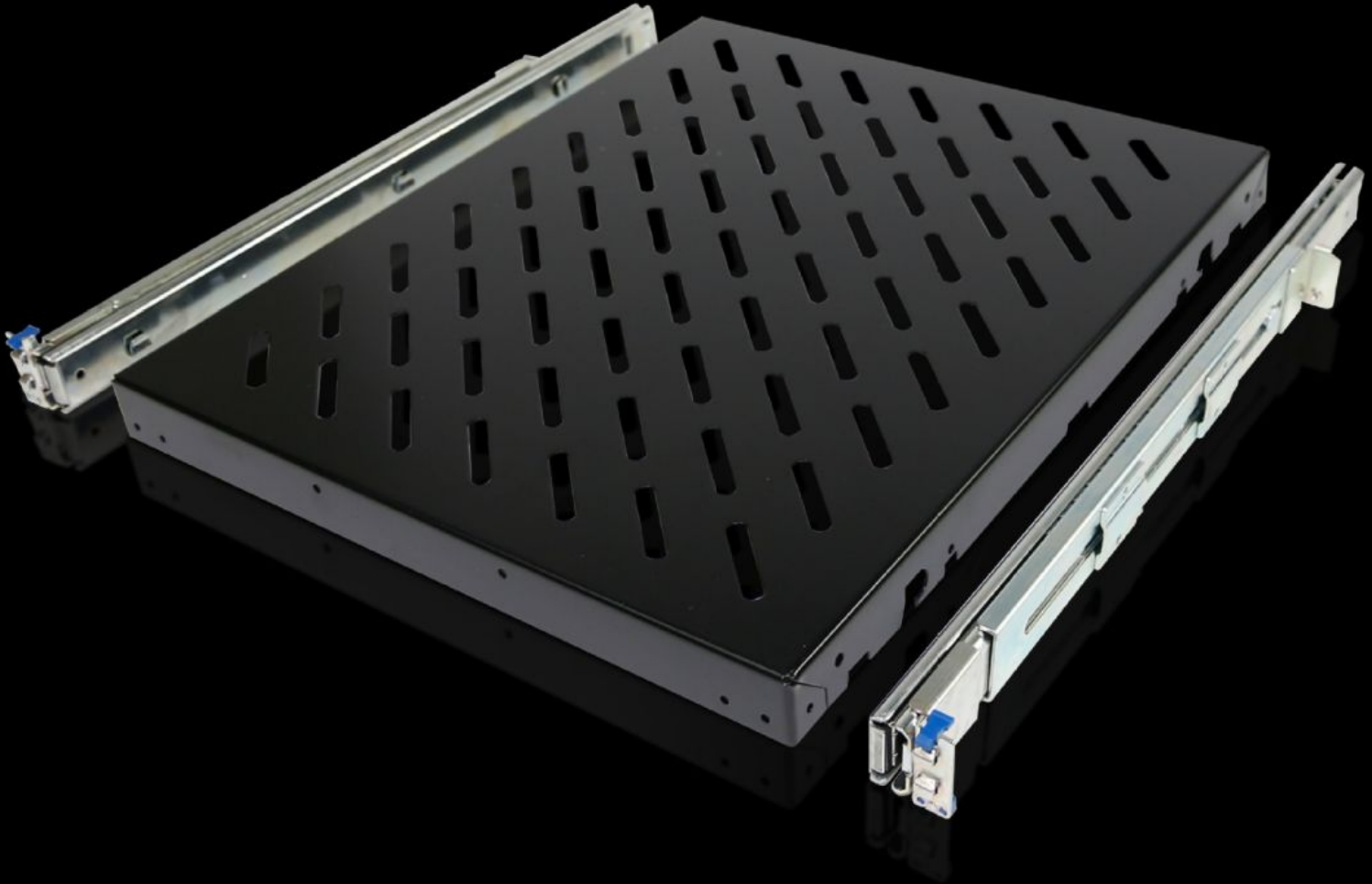


Rittal – The System.

Faster – better – everywhere.



DK 5501.675

Component shelf, pull-out

State: 17/04/2026 (Source: rittal.com/rs-sr)

ENCLOSURES

POWER DISTRIBUTION

CLIMATE CONTROL

IT INFRASTRUCTURE

SOFTWARE & SERVICES

FRIEDHELM LOH GROUP



DK 5501.675 - Component shelf, pull-out for VX IT, TS IT, TE, TX CableNet

For mounting between two 482.6 mm (19") mounting angles.



Features

Model No.	DK 5501.675
Product description	For mounting between two 482.6 mm (19") mounting levels, on 482.6 mm (19") mounting angles or 482.6 mm (19") mounting frames.
Benefits	Tool-free, time-saving one-man assembly from the enclosure front Self-locking Fully extendible
Applications	Depth-variable to adapt to individual distances between levels
Material	Sheet steel
Surface finish	Base: Spray-finished Telescopic slides/installation kit: Zinc-plated
Colour	RAL 9005
Supply includes	Component shelf, slotted Telescopic slide with mounting kit Assembly parts
Applications	For larger distances between levels, you will need to reduce the preconfigured distance, load capacity 50 kg.
Load capacity	50 kg

Features

Dimensions	Width: 419 mm Depth: 500 mm
To fit	Enclosure type: VX IT TS IT TE TX CableNet
Distance between levels	400 - 600 mm
Packs of	1 pc(s).
Net weight	5,9 kg
Gross weight	6,14 kg
PCF per pack (cradle-to-gate)	23.6 kg CO2 eq (Cat B)
Note on PCF category	Category B: PCF value (cradle-to-gate) based on the product weight, approximately calculated and self-declared
Customs tariff number	73269098
ETIM 9	EC002620
ECLASS 8.0	27189261
Product description	DK Component shelf, WHD: 419x1 Ux500 mm, 50 kg, distance between levels: 400-600 mm, Pull-out, RAL 9005

Tender text

482.6 mm (19") - component shelf, pull-out

482.6 mm component shelf, with telescopic slide, for L-shaped mounting angles and similar mounting angle shapes. For mounting between two 482.6 mm (19") mounting angles. Complete kit including depth-variable installation kit for 482.6 mm (19") mounting levels from 400 to 600 mm.

Tool-free, accessory-free, time-saving one-man assembly from the enclosure front.

Locate, pull-out, snap into position.

Perforated component shelf surface to support climate control inside the enclosure. The component shelf is self-locking, fully extendible.

Component shelf depth 500 mm, load capacity 50 kg, component shelf height 1 U.

Material: Sheet steel

Surface finish: Spray finished

Colour: RAL 9005

Model No. DK: 5501.675