

Rittal – The System.

Faster – better – everywhere.



TX 5541.220 TX Colocation rack

State: 28/05/2026 (Source: rittal.com/rs-sr)

ENCLOSURES

POWER DISTRIBUTION

CLIMATE CONTROL

IT INFRASTRUCTURE

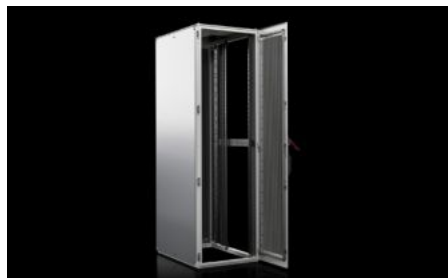
SOFTWARE & SERVICES

FRIEDHELM LOH GROUP



TX 5541.220 - TX Colocation rack

The world of IT is changing, and the centralisation of IT in large data centres has become a long-term trend. The TX Colo, which is perfectly adapted to use in a large data centre, is our response. Thanks to its forward-thinking configuration, the TX Colo is ready for immediate use to suit your application!



Features

Model No.	TX 5541.220
Design	Standard
Material	Sheet steel
Surface finish	Enclosure frame: Dipcoat-primed Interior installation: Spray-finished Doors and roof: Dipcoat-primed, powder-coated Perforated Door, Sheet Steel
General colour	RAL 7035
Colour	Enclosure frame and roof: RAL 7035 Door: RAL 7035 Handle and hinges: RAL 9005

Features

Supply includes	Enclosure frame with doors and roof plate Sheet steel front door, vented, 130° hinges Rear door made of sheet steel, divided, vented, 130° hinges Lock, front and rear: Comfort handle VX with numerical code Roof plate with cable entry across the full enclosure depth, left and right Divider panel, fitted to the left-hand side of the enclosure 150 mm cable tray, fitted to the rear, right-hand side of the enclosure 10 x captive nuts with screws (enclosed) Grounding accessories (supplied loose) Mounting angles, 482.6 mm (19") Air baffle plate Baying kit (supplied loose)
Material thickness - door	1,2 mm
Dimensions	Width: 800 mm Height: 2,200 mm Depth: 1,200 mm
Units	47 U
Distance between levels as delivered	745 mm
Distance between mounting levels min	115 mm
Distance between mounting levels max	341 mm
482.6 mm (19") attachment	800 mm-wide enclosure mounted on cross-members
Design	Standard
Roof design	Roof plate with cable entry across the full enclosure depth, left and right
Design doors	Vented doors
Rear door design	Sheet steel door, vented two-piece Vented surface area approx. 78 % perforated

Features

Front door design	Sheet steel door, vented Aluminium/sheet steel door, vented one-piece Vented surface area approx. 78 % perforated
Base design	Open
Mounting angles position	482.6 mm (19") level, front and rear
Load capacity	15.000 N
Note	Depending on how and where it is sited, the door opening angle may vary for selected applications
Packs of	1 pc(s).
Net weight	131 kg
Gross weight	141 kg
Customs tariff number	94032080
ETIM 9	EC002499
ETIM 8	EC002499
ECLASS 8.0	27180207
Product description	TX Colocation server rack, WxHxD: 800x2200x1200 mm, 47 U, vented sheet steel door at the front, vented sheet steel door at the rear, vertically divided, 130° hinges front and rear

Approvals

Explanations	Declaration of conformity Declaration of conformity UK
--------------	---