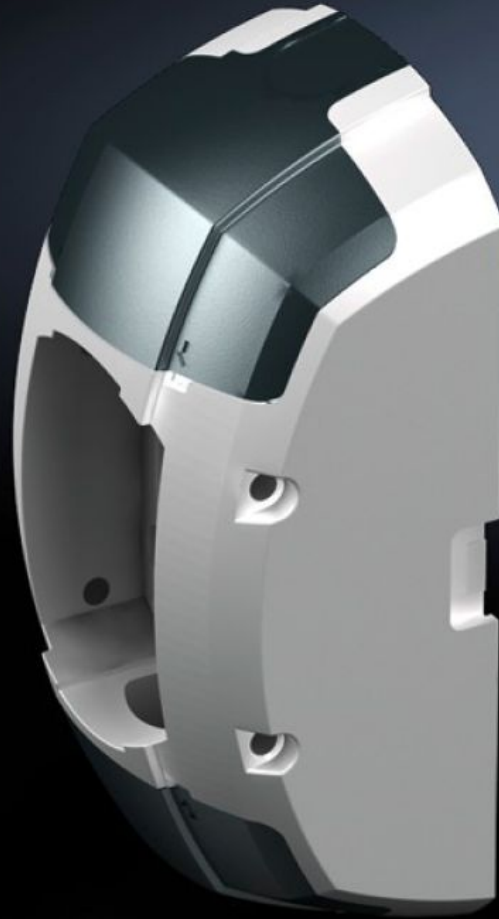


**Rittal – The System.**

Faster – better – everywhere.



**CP 6212.800**

**Wall/base mounting bracket CP  
120, large**

State: 26/06/2026 (Source: [rittal.com/rs-sr](http://rittal.com/rs-sr))

ENCLOSURES

POWER DISTRIBUTION

CLIMATE CONTROL

IT INFRASTRUCTURE

SOFTWARE & SERVICES

FRIEDHELM LOH GROUP



# CP 6212.800 - Wall/base mounting bracket CP 120, large

For stable attachment of the support arm system to vertical or horizontal surfaces.

## Features

Model No.	CP 6212.800
Product description	For stable attachment of the support arm system to vertical or horizontal surfaces.
Benefits	Prepared for flexible cable entry and routing from all sides Integral one-man assembly via machined keyhole Optional anti-twist attachment on the mounting surface by pinning Integral adjustment facility
Material	Wall/base mounting bracket: Cast aluminium Cover: Plastic
Colour	Wall/base mounting bracket, RAL 7035 Cover: RAL 7024
Supply includes	Seals Grub screws Adjusting screws Self-tapping screws for support section attachment
Rifid y/n	Yes
Packs of	1 pc(s).
Net weight	2,652 kg
Gross weight	2,852 kg
Customs tariff number	83024900
ETIM 9	EC000882
ECLASS 8.0	27400556
Product description	CP Wall/base mounting bracket CP 120, large

# Approvals

---

Explanations

Manufacturer's declaration