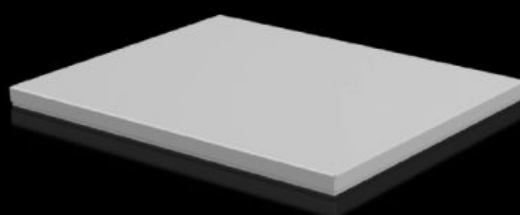


# Rittal – The System.

Faster – better – everywhere.



## CX 6730.940 Cover plate

State: 12/04/2026 (Source: [rittal.com/rs-sr](http://rittal.com/rs-sr))

ENCLOSURES

POWER DISTRIBUTION

CLIMATE CONTROL

IT INFRASTRUCTURE

SOFTWARE & SERVICES

FRIEDHELM LOH GROUP



# CX 6730.940 - Cover plate For CX console system

To seal the roof opening of CX pedestals and desk units.

## Features

Model No.	CX 6730.940
Material	Sheet steel
Surface finish	Textured paint
Colour	RAL 7035
Supply includes	Assembly parts
To fit	Enclosure type: CX pedestal Width: = 600 mm Depth: = 500 mm
Protection category NEMA	NEMA 1 NEMA 12
IP protection category to IEC 60529	IP 55
Packs of	1 pc(s).
Net weight	5 kg
Gross weight	5,147 kg
Customs tariff number	94039910
ETIM 9	EC000784
ETIM 8	EC000784
ECLASS 8.0	27180504
Product description	CX cover plate, for CX pedestal, for WxD: 600x500 mm, sheet steel

## Approvals

# Approvals

---

Approvals

UL + C-UL (listed)

---

Explanations

Declaration of conformity