

Rittal – The System.

Faster – better – everywhere.



IW 6902.640

Enclosure attachment, tilting, base mounting

State: 29/05/2026 (Source: rittal.com/rs-sr)



ENCLOSURES

POWER DISTRIBUTION

CLIMATE CONTROL

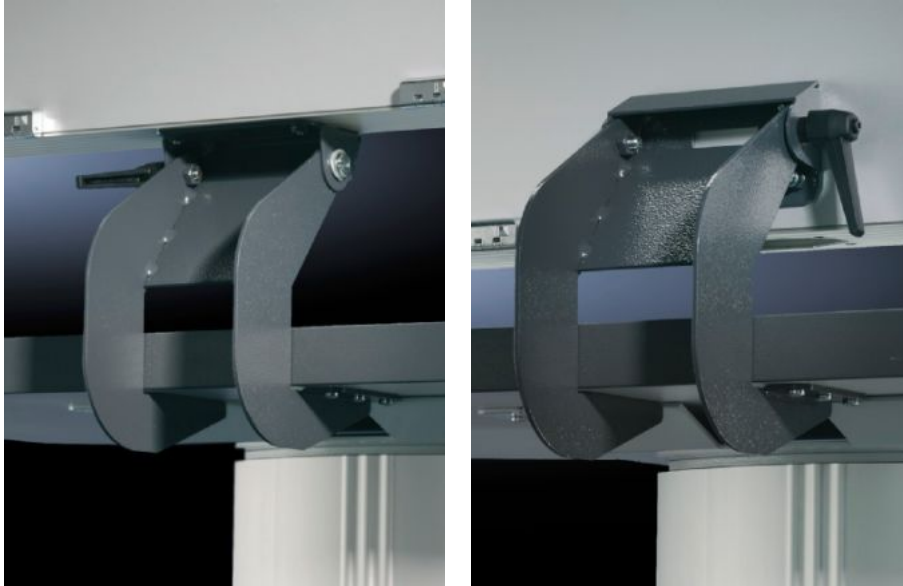
IT INFRASTRUCTURE

SOFTWARE & SERVICES

FRIEDHELM LOH GROUP

IW 6902.640 - Enclosure attachment, tilting, base mounting CP-L, square 120 x 65 mm

The enclosure attachment can be mounted either on the support arm connection of the Optipanel enclosure or on the underside or rear of any enclosure.



Features

Model No.	IW 6902.640
Product description	With mounting cut-out for connector grommet for sealed cable entry.
Material	Sheet steel
Surface finish	Spray-finished
Colour	RAL 7024
Supply includes	Assembly parts
Note	The enclosure attachment can be mounted either on the support arm connection of the Optipanel enclosure or on the underside or rear of any enclosure.
OUT_TILT_ANGLE	-40 - 40 °
Packs of	1 pc(s).
Net weight	1,654 kg

Features

Gross weight	1,854 kg
Customs tariff number	73269098
ECLASS 8.0	27400557
