

**Rittal – The System.**

Faster – better – everywhere.



**DK 7119.250**

**Component shelf 2 U, static  
installation**

State: 18/06/2026 (Source: [rittal.com/rs-sr](http://rittal.com/rs-sr))

ENCLOSURES

POWER DISTRIBUTION

CLIMATE CONTROL

IT INFRASTRUCTURE

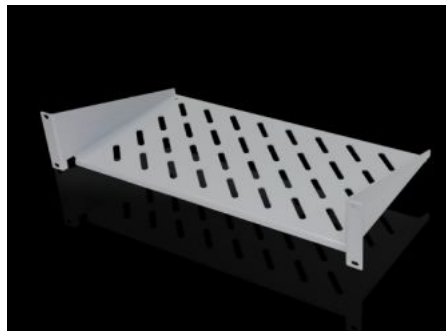
SOFTWARE & SERVICES

FRIEDHELM LOH GROUP



# DK 7119.250 - Component shelf 2 U, static installation

Component shelf 2 U, static installation for attachment to the 482.6 mm (19") system punchings.  
Load capacity: 25 kg.



## Features

|                               |  |
|-------------------------------|--|
| Model No.                     | DK 7119.250  |
| Design                        | 482.6 mm (19")   |
| Product description           | For mounting between 482.6 mm (19") mounting angles.   |
| Material                      | Sheet steel  |
| Surface finish                | Spray-finished   |
| Colour                        | RAL 7035   |
| Load capacity                 | 25 kg surface load, static   |
| Note                          | Not suitable for combination with telescopic slides.   |
| Dimensions                    | Width: 482.6 mm<br>Depth: 250 mm   |
| Packs of                      | 1 pc(s).   |
| Net weight                    | 1,92 kg  |
| Gross weight                  | 2,223 kg   |
| PCF per pack (cradle-to-gate) | 9 kg CO2 eq (Cat B)  |
| Note on PCF category          | Category B: PCF value (cradle-to-gate) based on the product weight, approximately calculated and self-declared |

# Features

|                       |  |
|-----------------------|--|
| Customs tariff number | 94039910   |
| ETIM 9                | EC002620   |
| ECLASS 8.0            | 27189261   |
| Product description   | DK Component shelf, WHD: 482,6x2 Ux250 mm, 25 kg, static, distance between levels:, static installation, For 482.6 mm (19") system punchings, RAL 7035 |

## Tender text

Component shelf, 2 U, static

Load capacity: 25 kg surface load, static

Material: Sheet steel, spray finished in RAL 7035

Dimensions (W x H x D): 483 mm x 88 mm x 250 mm