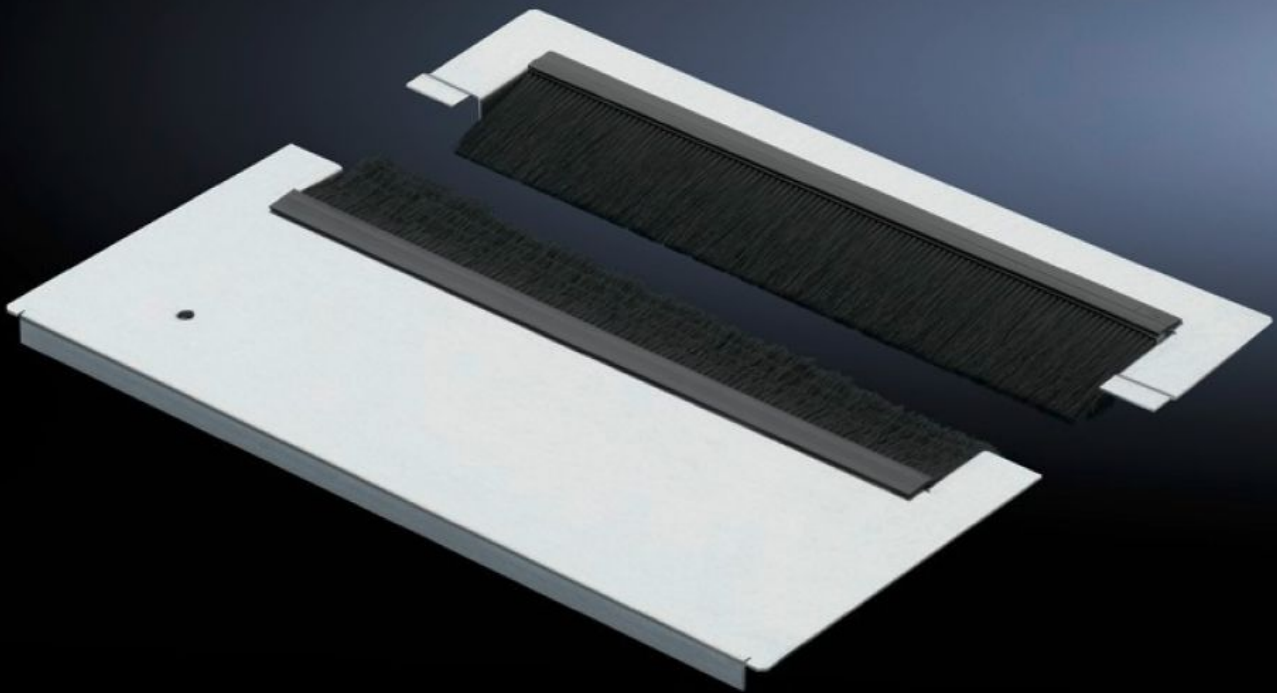


Rittal – The System.

Faster – better – everywhere.



TS 7825.367

Gland plate modules for cable entry

State: 14/05/2026 (Source: rittal.com/rs-sr)

ENCLOSURES

POWER DISTRIBUTION

CLIMATE CONTROL

IT INFRASTRUCTURE

SOFTWARE & SERVICES

FRIEDHELM LOH GROUP



TS 7825.367 - Gland plate modules for cable entry for TS, TS IT, VX SE

The two-part base module has a special cable entry with alternate offset brush strips which guarantee an excellent seal even with large cable quantities.



Features

Model No.	TS 7825.367
Design	Cable entry with brush strip, super-airtight
Product description	Special brush strips with brush strips offset on alternate sides offer maximum possible protection with professional cable entry. The two-piece design even allows retrospective fitting of the base module with the cables already installed.
Material	Module plate: Sheet steel Brush strip: Plastic, UL 94 HB, halogen-free
Surface finish	Module plate: Zinc-plated
Supply includes	Assembly parts Including clips
Note	Several gland module plates need to be combined to close off the base completely in the TS-IT
Dimensions	Depth: 237.5 mm
To fit	Enclosure type: TS TS IT SE Width: 600 mm
Packs of	1 pc(s).

Features

Net weight	1,3 kg
Gross weight	1,42 kg
Customs tariff number	83024200
ETIM 9	EC002620
ECLASS 8.0	27189261
Product description	DK Gland plate module, For W: 600 mm, For cable entry with brush, super-airtight

Tender text

TS 8 / FR(i) base module,
For use in the base frame of the enclosure frame.
Module depth 238 mm, can be exchanged for base module
of the same dimensions
Base module can be used in enclosures of depth 600,
800, 900, 1,000 and 1,200 mm.
The base module has a large opening for cable entry
into the enclosure. The base plate is divided in two
and can thus be taken out at any time for more
straightforward assembly during installation work,
even for already existing pre-installation. The entry
opening has special brush strips on both sides which
are mutually offset and thus make efficient sealing
off of the inner area from the surrounding area
possible even for larger amounts of cables.

Material: Sheet steel

For enclosure width: 600 mm