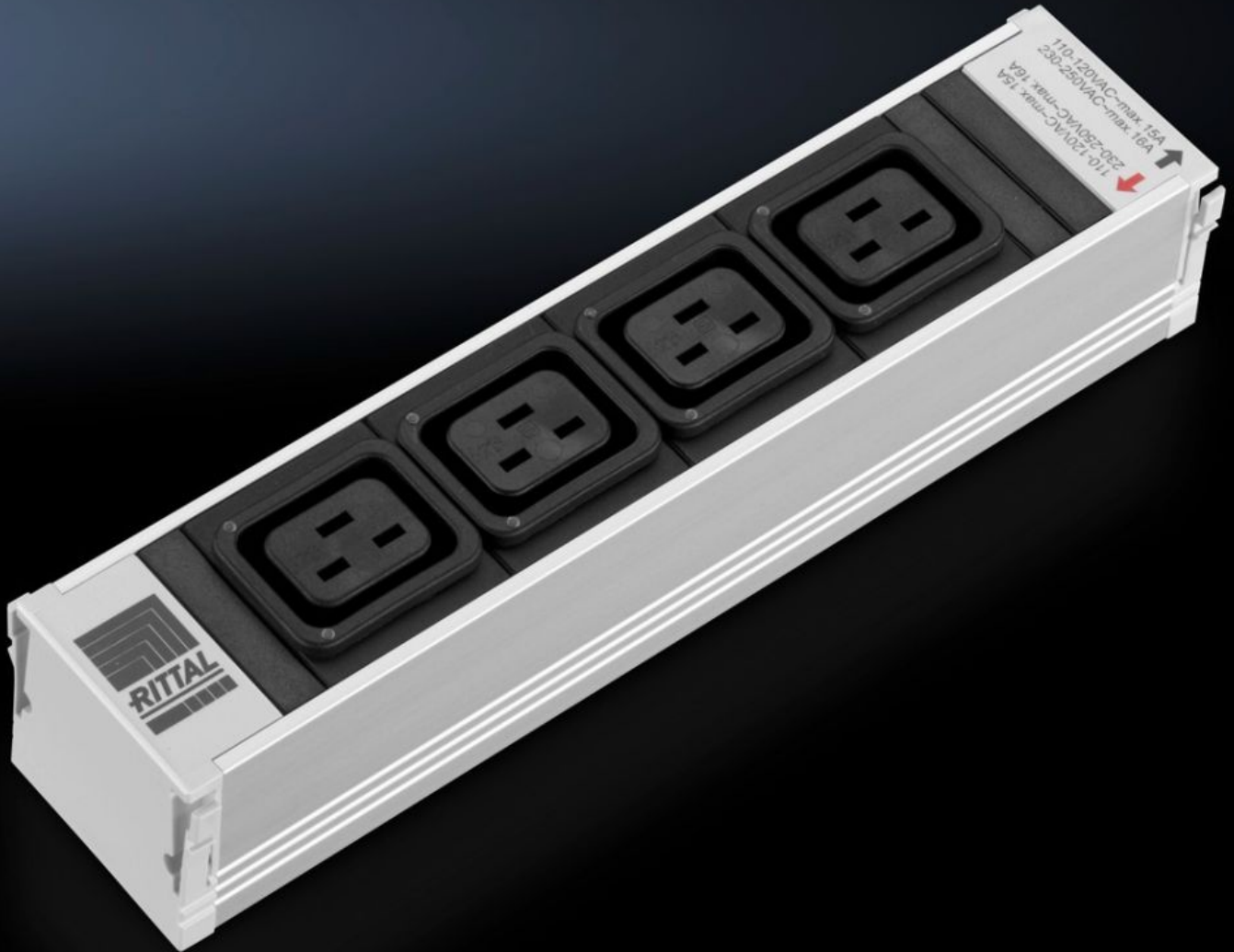


Rittal – The System.

Faster – better – everywhere.



DK 7859.130 PSM socket modules

State: 13/06/2026 (Source: rittal.com/rs-sr)

ENCLOSURES

POWER DISTRIBUTION

CLIMATE CONTROL

IT INFRASTRUCTURE

SOFTWARE & SERVICES

FRIEDHELM LOH GROUP



DK 7859.130 - PSM socket modules

The various modules may be inserted into the support rail in any combination.

Features

Model No.	DK 7859.130
Design	non-switchable, with LED display
Product description	The modular system facilitates basic configuration of the racks, thanks to a vertical support rail with single-/3-phase infeed. The various socket modules to supply the active components may be snap-fitted into the support rail. The various modules, earthing pins, IEC320 etc. may be inserted into the support rail in any combination. This is easily achieved, even by non-electricians, thanks to the shock hazard protected plug & play system.
Material	Section: Aluminium, anodised Socket inserts: Plastic (PA6 GF 30 V1)
Length	250 mm
Type of electrical connection	WAGO WINSTA MIDI
Phases per infeed	1~
Thermal overcurrent protection	–
Rated operating voltage	110 V – 230 V AC, 50/60 Hz
Rated current (max.)	16 A
Required number of module slots	1
Dimensions	Length: 250 mm
Operating temperature range	5 °C...45 °C
Ambient humidity (non-condensing)	5...95 %
Sockets	4 x IEC 320 socket C19
Packs of	1 pc(s).
Net weight	0,38 kg

Features

Gross weight	0,385 kg
Customs tariff number	85369001
ETIM 9	EC000330
ECLASS 8.0	27142604
Product description	DK PSM Plus socket module, C19, 4-way, black, nicht schaltbar, mit LED

Approvals

Approvals	IEC CB VDE
Explanations	Declaration of conformity

Tender text

Rittal Power System Module

PSM module with 4 x C19 slots for plugging in a Rittal PSM busbar.

The module occupies a slot on the rail. In this way up to 7 (4) modules may be installed in a PSM busbar for 2000 (1200) mm high racks. Combined population of different modules is also supported. Multi-coloured LEDs on the module indicate the current load. Up to 7 A the green LEDs are lit and up to 13 A the yellow ones are lit.

If the current rises over 13 A, the red LEDs are lit to indicate that no further load may be connected. These threshold values cannot be changed.

Technical specifications:

Dimensions: WxHxD: 50 x 250 x 45 mm

Operating temperature: +5 up to 45°C

Ambient humidity: 5 to 95% relative humidity

Protection category: IP 20

Maximum current per module: 16 A

Connections:

4 x IEC 60 320 C19

Material: Aluminium section with black plastic cover.

Supply includes:

- 1 PSM module with LEDs

Packs of 1