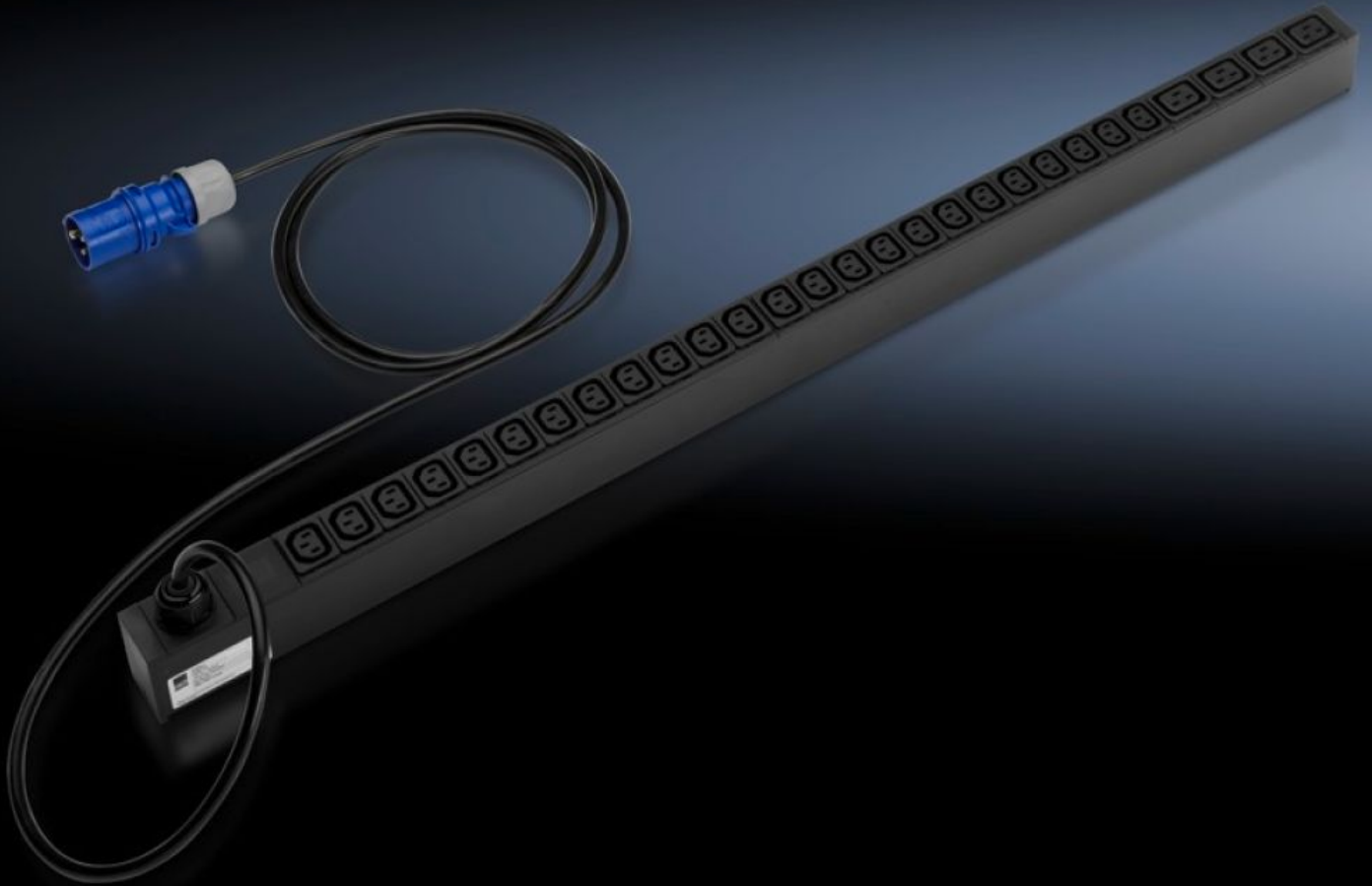


Rittal – The System.

Faster – better – everywhere.



DK 7955.110

PDU international, basic version

State: 08/06/2026 (Source: rittal.com/rs-sr)

ENCLOSURES

POWER DISTRIBUTION

CLIMATE CONTROL

IT INFRASTRUCTURE

SOFTWARE & SERVICES

FRIEDHELM LOH GROUP



DK 7955.110 - PDU international, basic version

IT rack power distribution in a range of different variants. Input with CEE connector (16 A/32 A) and C13 and C19 outputs. Distribution output from 3.7 kW to 22 kW.

Features

Model No.	DK 7955.110
Design	PDU Basic
Product description	Robust, compact basic power distributor for the IT environment. Thanks to the compact PDU, any IT rack may be easily equipped with a professional power distribution system. With the TS IT rack, assembly is even tool-free. The compact design allows simple assembly.
Material	Aluminium section, black anodised
Dimensions	Width: 44 mm Depth: 62 mm Length: 970 mm
No. of sockets and type	24 x C13 / 4 x C19
Sockets	24 x IEC 320 socket C13 4 x IEC 320 socket C19
Rated current (max.)	16 A
Infeeds	Qty.: 1 Phases per infeed: 1~
Length of connection cable	3 m
Type of electrical connection	CEE
Directives	EMC Directive 2014/30/EU Low Voltage Directive 2014/35/EU
Standards	EN 60950-1
Operating temperature range	0 °C...45 °C
Ambient humidity (non-condensing)	10...95 %

Features

Storage temperature range	-25 °C...70 °C
To fit	Enclosure type: TS IT: ≥ 1,200 mm
Packs of	1 pc(s).
Net weight	3,133 kg
Gross weight	3,333 kg
Customs tariff number	85366990
ETIM 9	EC002762
ECLASS 8.0	27142604
Product description	DK PDU international, basic version, Compact basic power distributor, WLD: 44x970x62 mm, 24xC13, 4xC19, black, CEE, 1~, 16 A

Tender text

Rittal PDU basic, Model No.: DK 7955.110

Compact power distribution system for use in IT servers and network enclosures. Vertical mounting using the universal support (supplied) for common IT racks. Suitable for tool-less, fast assembly in Rittal TS IT racks, by means of special "Plug&Play" fastening system (also supplied). Sturdy aluminium enclosure with fixed output slots (EN60320/C13 or EN60320/C19, depending on the type). The output slots can be protected with a latch to prevent inadvertent cable withdrawal. Unused slots can be closed with covers. This prevents the inadvertent overloading of individual phases and circuits. The circuits/phases are marked in colour with multiphase PDU versions. Depending on the version, a fixed connection cable with a CEE connector is installed, so that the PDU is immediately ready for use.

The warranty period is 24 months during normal operation as intended.

Technical specifications of the "PDU basic"

Input voltage range (L-N): 90 V - 260(400) V AC, 50-60 Hz

Input current: 16 A

No. of phases: 1

Marking of the phases, (3-phase PDUs only: L1, L2, L3): Brown, black, grey

Number of slots, type EN60320/C13 (total): 24

Number of slots, type EN60320/C13 (per phase/fuse): 24

Number of slots, type EN60320/C19 (total): 4

Number of slots, type EN60320/C19 (per phase/fuse): 4

Number of circuit breakers: 0

PDU input connector: EN60309 / CEE

Length of the connection cable: 3 m

Connection cable type: H05-VV

Number of wires: 3

Cable cross section: 2.5 mm²

PDU enclosure width: 44 mm (1 U)

PDU enclosure depth: 62 mm

PDU enclosure height: 970 mm

PDU material: Aluminium, anodized, RAL 9005 (black)

PDU mounting adapter: Plastic, black

Conformity: CE

Standards:

Safety: EN 60950-1

Safety guideline: 2006/95/EC

MTBF (at 40°C) 80,000 hours

Protection category: IP 20 (EN 60529)

Protection category: Class 3

Level of contamination: 2

Overvoltage class: II

Environmental properties: RoHS

Storage temperature -25°C to +70°C

Ambient temperatures 0°C to +45°C

Relative humidity 10 to 95% RH, non-condensing

Connector locking C13 and C19: 1x (further optional DK 7955.020)

C13 covers in range of goods supplied: 8x (further optional DK 7955.010)

C19 covers in range of goods supplied: 2x (further optional DK 7955.015)

Warranty: 24 months

Type: Rittal PDU basic, Model No.: DK 7955.110