

Rittal – The System.

Faster – better – everywhere.



RX 9365.013

RiLineX baying connector

State: 22/05/2026 (Source: rittal.com/rs-sr)

ENCLOSURES

POWER DISTRIBUTION

CLIMATE CONTROL

IT INFRASTRUCTURE

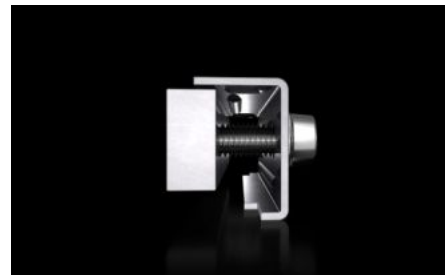
SOFTWARE & SERVICES

FRIEDHELM LOH GROUP



RX 9365.013 - RiLineX baying connector for busbars

Long busbar connector for the enclosure-to-enclosure baying set, for connecting modular RiLineX boards. The 3-pole baying set (9360104) is additionally required.



Features

Model No.	RX 9365.013
Material	Upper part: Sheet steel, zinc-plated Contact plate: E-Cu, tin-plated
Rated current (max.)	800 A
Dimensions	Width: 130 mm
To fit busbars	15 x 5/10 20 x 5/10 30 x 5/10
Packs of	3 pc(s).
Net weight	1,5 kg
Gross weight	1,593 kg
Copper weight (kg per piece)	0,99
PCF per pack (cradle-to-gate)	8.7
Customs tariff number	73269098
ETIM 9	EC002622
Product description	Long busbar connector for the enclosure-to-enclosure baying set, for connecting modular RiLineX boards. The 3-pole baying set (9360104) is additionally required. For E-Cu 15x5-30x10 mm, L: 130 mm

Approvals

Approvals	UL + C-UL (listed)
Explanations	Declaration of conformity PCF-declaration

Tender text

RiLineX Anreihverbinder für Sammelschienen (lang)

Long busbar connector for the enclosure-to-enclosure baying set, for connecting modular RiLineX boards.

The baying set (9360104) is additionally required.

For voltages up to 1000 V AC and 1500 V DC.

Tested short-circuit resistance up to 65 kA.

IEC and UL approved.

Product information

Number of poles: 3

Busbar dimensions: 15/20/30 mm x 5/10 mm

Rated current max.: 550/800 A

Manufacturer: Rittal GmbH & Co. KG

Type: 9365013