

Rittal – The System.

Faster – better – everywhere.



RX 9365.725

RiLineX support rail for component adaptor

State: 25/05/2026 (Source: rittal.com/rs-sr)

ENCLOSURES

POWER DISTRIBUTION

CLIMATE CONTROL

IT INFRASTRUCTURE

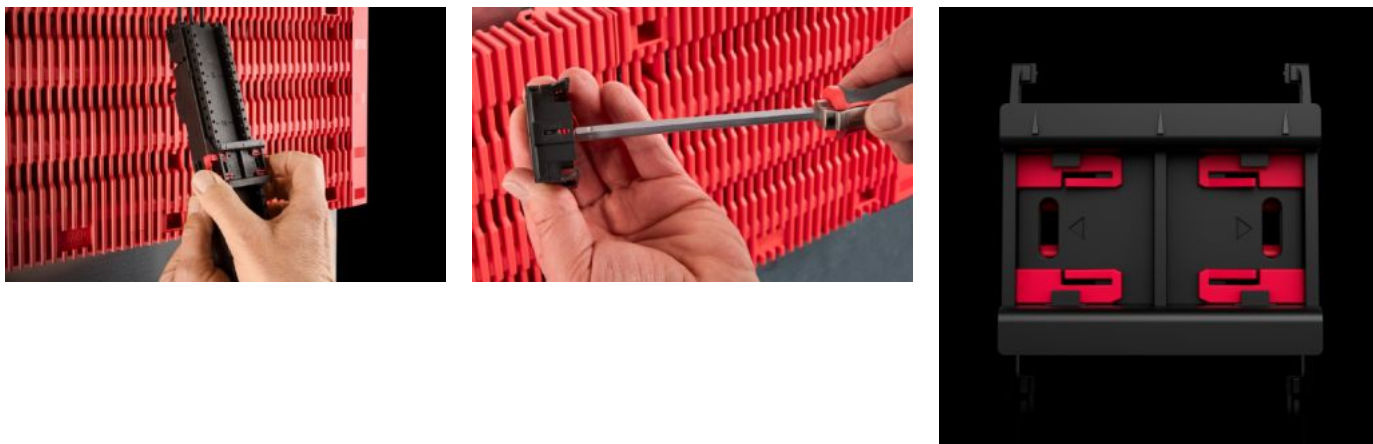
SOFTWARE & SERVICES



FRIEDHELM LOH GROUP

RX 9365.725 - RiLineX support rail for component adaptor

RiLineX support rails for component adaptors in width 54 mm for 60 mm busbar systems. For mounting top-mounted equipment with snap fastening on component adaptors and component supports.



Features

| | |
|-------------------------------|--|
| Model No. | RX 9365.725 |
| Design | with locking clip |
| Material | Polyamide (PA 6) Fire protection corresponding to UL 94 |
| Colour | RAL 9005 RAL 35745 |
| To fit Model No. | 9360740 9360760 9360780 |
| Dimensions | Width: 54 mm Height: 10 mm |
| Packs of | 8 pc(s). |
| Net weight | 0,08 kg |
| Gross weight | 0,107 kg |
| PCF per pack (cradle-to-gate) | 0.53 |
| Customs tariff number | 39269097 |

Features

ETIM 9

EC001285

Product description

RiLineX support rails for component adaptors in width 54 mm for 60 mm busbar systems. For mounting top-mounted equipment with snap fastening on component adaptors and component supports.

Approvals

Explanations

Declaration of conformity
PCF-declaration