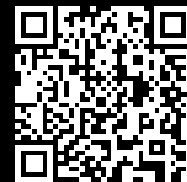


Rittal – The System.

Faster – better – everywhere.



SV 9650.202

Maxi-PLS busbar, E-Cu

State: 28/05/2026 (Source: rittal.com/rs-sr)

ENCLOSURES

POWER DISTRIBUTION

CLIMATE CONTROL

IT INFRASTRUCTURE

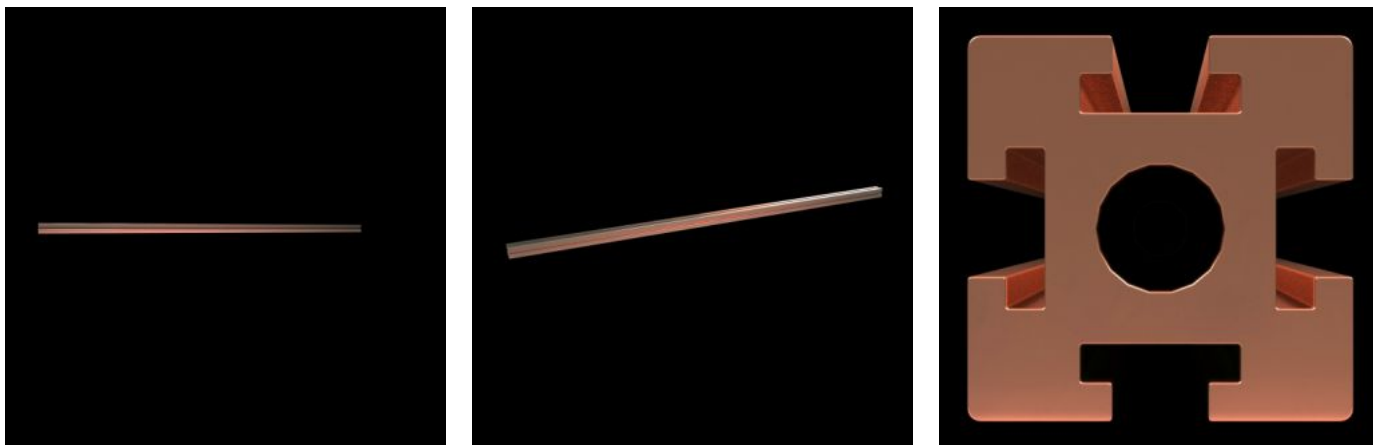
SOFTWARE & SERVICES

FRIEDHELM LOH GROUP



SV 9650.202 - Maxi-PLS busbar, E-Cu for Maxi-PLS 60 system

Size: 60x60 mm, bar cross-section: 2323 mm²



Features

Model No.	SV 9650.202
Product description	For assembling cable connection systems.
Material	E-Cu
Cross-section	2.323 mm ²
Length	451 mm
Note	May be cut individually to required length
To fit	Width: = 600 mm
Packs of	1 pc(s).
Net weight	9,364 kg
Gross weight	9,364 kg
Copper weight (kg per piece)	9,364
Customs tariff number	74071000
ETIM 9	EC001522
ECLASS 8.0	27370303

Features

Product description	SV Maxi-PLS busbar E-Cu, L: 451 mm, 60x60 mm, bar cross-section: 2323 mm ²
---------------------	--

Approvals

Approvals	DNV Lloyds Register UL + C-UL (listed)
-----------	--

Explanations	Declaration of conformity UK
--------------	------------------------------