

**Rittal – The System.**

Faster – better – everywhere.



**SV 9650.291**

**Maxi-PLS busbar, E-Cu**

State: 21/05/2026 (Source: [rittal.com/rs-sr](http://rittal.com/rs-sr))

ENCLOSURES

POWER DISTRIBUTION

CLIMATE CONTROL

IT INFRASTRUCTURE

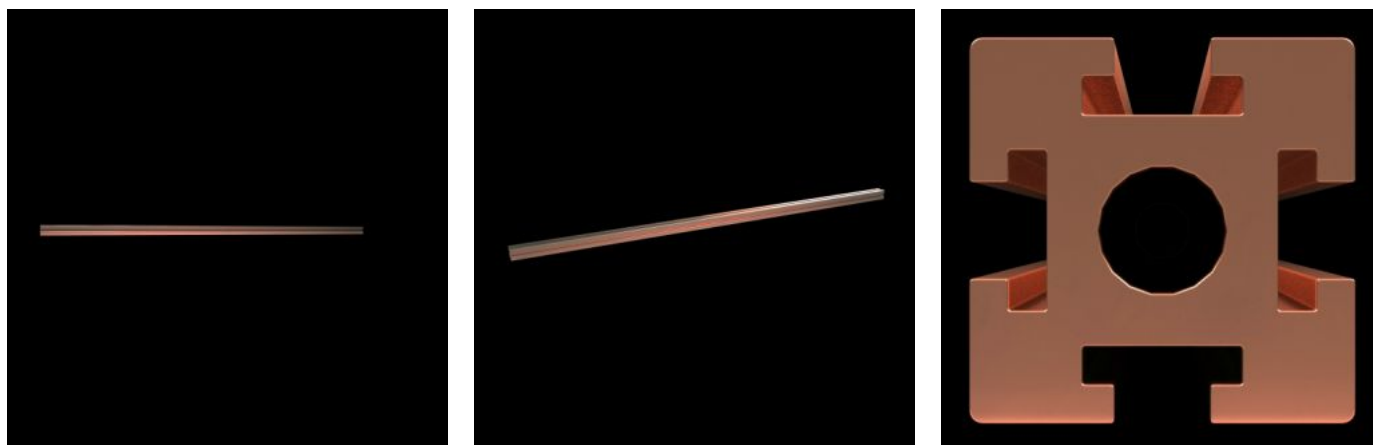
SOFTWARE & SERVICES

FRIEDHELM LOH GROUP



# SV 9650.291 - Maxi-PLS busbar, E-Cu for Maxi-PLS 60 system

Size: 60x60 mm, bar cross-section: 2323 mm<sup>2</sup>



## Features

Model No.	SV 9650.291
Product description	For assembling cable connection systems.
Material	E-Cu
Cross-section	2.323 mm <sup>2</sup>
Length	1.091 mm
Note	May be cut individually to required length
To fit	Width: = 1,200 mm
Packs of	1 pc(s).
Net weight	22,55 kg
Gross weight	22,55 kg
Copper weight (kg per piece)	22,55
Customs tariff number	74071000
ETIM 9	EC002525
ECLASS 8.0	27370303
Product description	SV Maxi-PLS busbar E-Cu, L: 1091 mm, Maxi-PLS 3200

# Approvals

---

Approvals

UL + C-UL (listed)

---

Explanations

Manufacturer's declaration

Declaration of conformity

Declaration of conformity UK