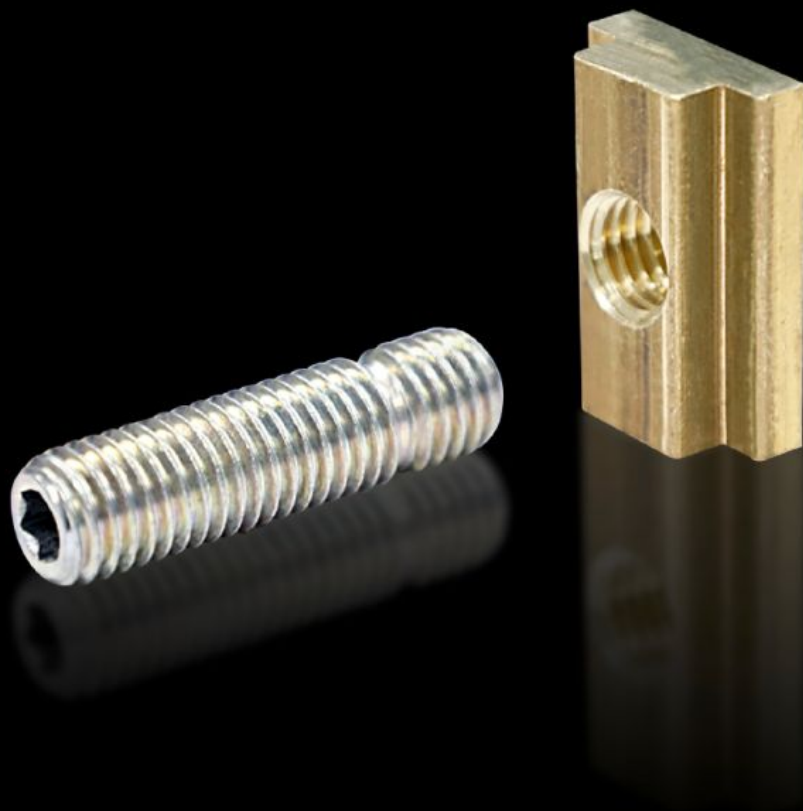
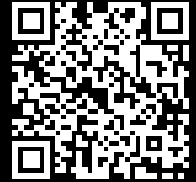


Rittal – The System.

Faster – better – everywhere.



SV 9650.370 Terminal studs

State: 13/05/2026 (Source: rittal.com/rs-sr)

ENCLOSURES

POWER DISTRIBUTION

CLIMATE CONTROL

IT INFRASTRUCTURE

SOFTWARE & SERVICES

FRIEDHELM LOH GROUP



SV 9650.370 - Terminal studs for Maxi-PLS

For connecting cables with ring terminals

Features

Model No.	SV 9650.370
Product description	For connecting cables with ring terminals.
Material	Terminal stud: Steel, zinc-plated Sliding block: Copper alloy
Supply includes	Terminal studs Sliding blocks Assembly parts
To fit busbars	Maxi-PLS 60
Dimensions	Thread: M12 Thread length: 32 mm
Packs of	3 pc(s).
Net weight	0,3 kg
Gross weight	0,347 kg
Customs tariff number	73181535
ETIM 9	EC002498
ECLASS 8.0	27379201
Product description	SV Terminal stud, M12, L: 32 mm, (Maxi-PLS 3200)

Approvals

Approvals	UL + C-UL (listed)
-----------	--------------------