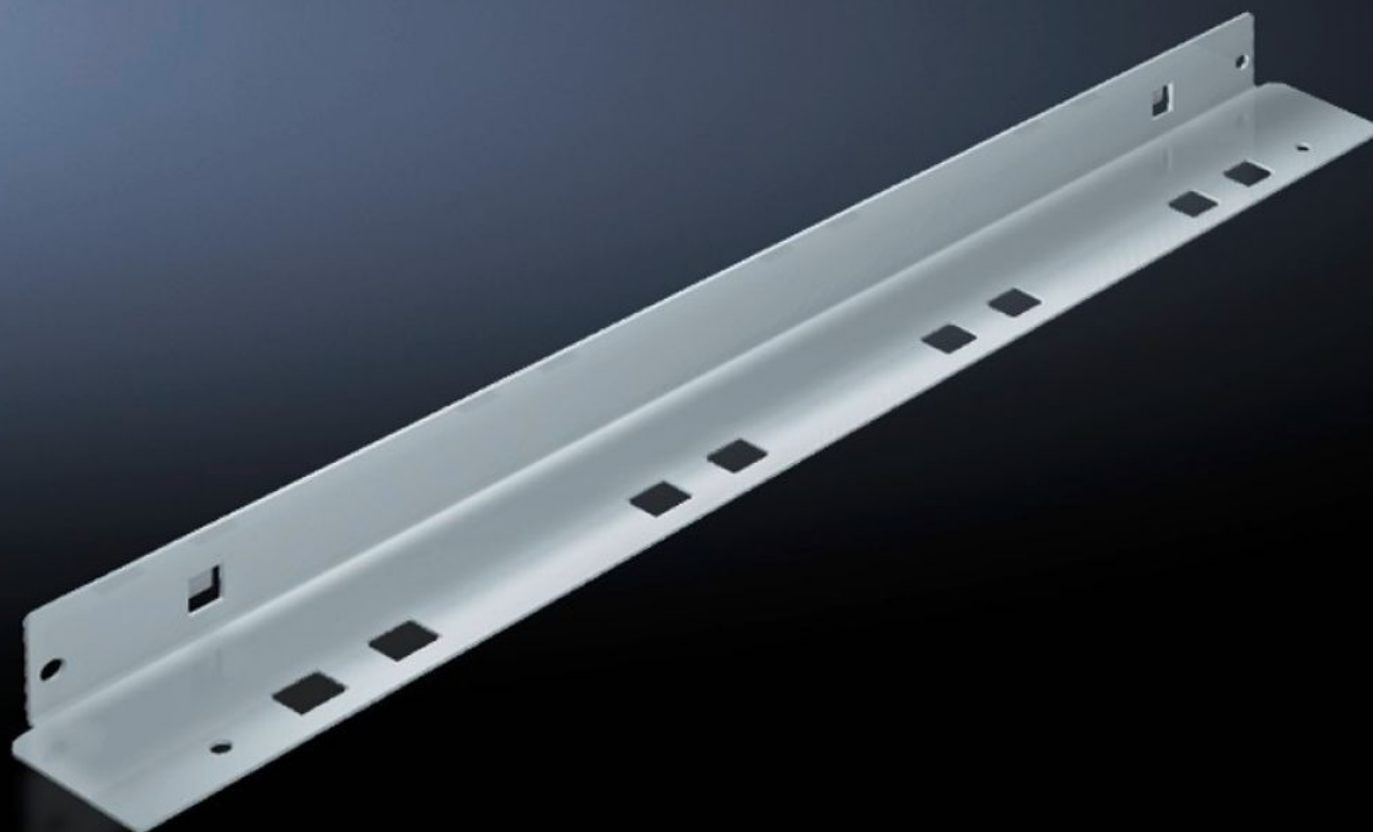
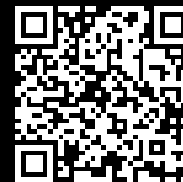


Rittal – The System.

Faster – better – everywhere.



SV 9673.408 Mounting bracket

State: 14/05/2026 (Source: rittal.com/rs-sr)

ENCLOSURES

POWER DISTRIBUTION

CLIMATE CONTROL

IT INFRASTRUCTURE

SOFTWARE & SERVICES

FRIEDHELM LOH GROUP



SV 9673.408 - Mounting bracket for compartment divider

May be attached to a TS frame, a side panel module or between a frame section and an auxiliary construction, allows slide-in attachment of compartment dividers.



Features

Model No.	SV 9673.408
Product description	The mounting bracket may be attached to a TS frame, to a side panel module or between a frame section and an auxiliary construction. Pre-machined mounting openings allow slide-in attachment of compartment dividers.
Material	Sheet steel, 1.5 mm
Surface finish	Zinc-plated
Supply includes	Assembly parts
For compartment depth	800 mm
Length	752 mm
Dimensions	Length: 752 mm
Packs of	8 pc(s).
Net weight	4,88 kg
Gross weight	5 kg
Customs tariff number	73182900
ETIM 9	EC002525
ECLASS 8.0	27400613
Product description	SV Mounting bracket, L: 752 mm, for compartment divider