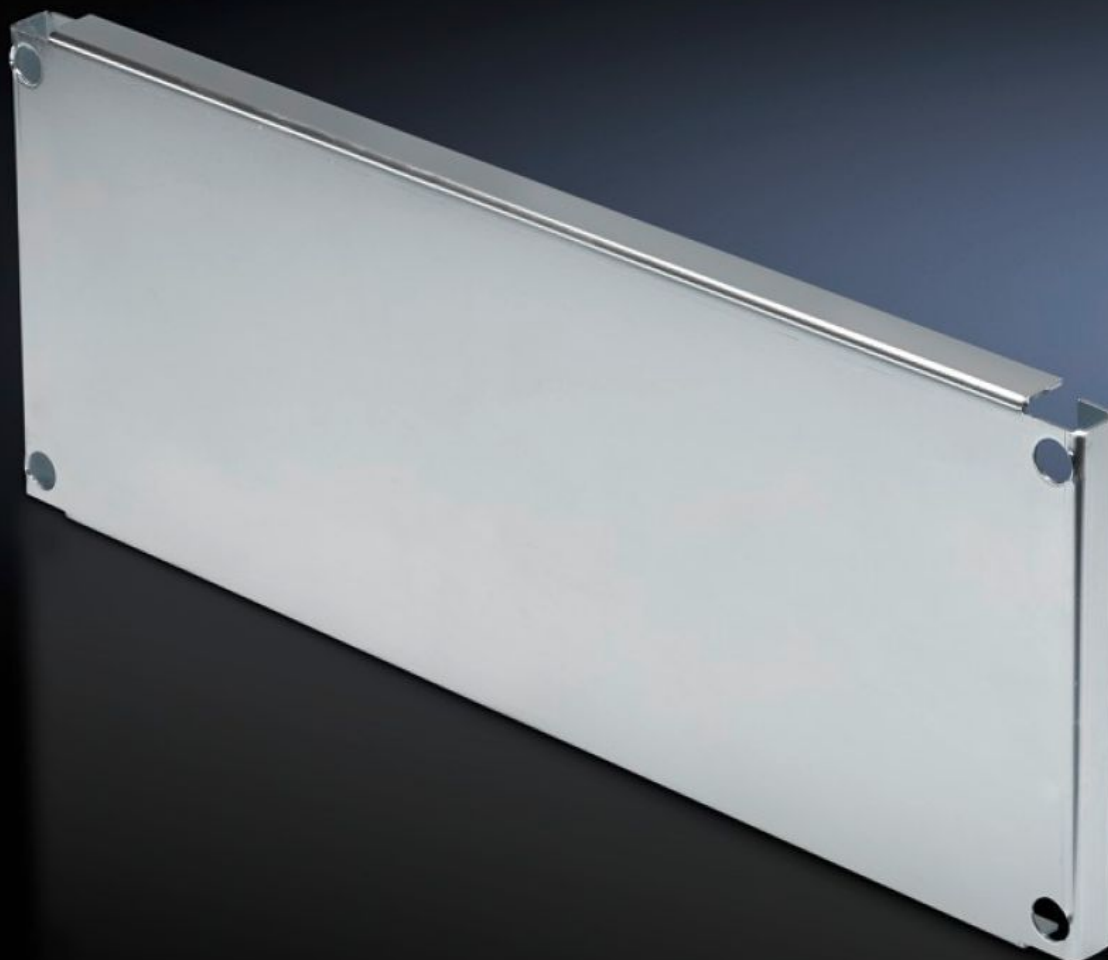


# Rittal – The System.

Faster – better – everywhere.



## SV 9673.660

# Partial mounting plates

State: 16/04/2026 (Source: [rittal.com/rs-sr](http://rittal.com/rs-sr))

ENCLOSURES

POWER DISTRIBUTION

CLIMATE CONTROL

IT INFRASTRUCTURE

SOFTWARE & SERVICES

FRIEDHELM LOH GROUP



# SV 9673.660 - Partial mounting plates for compartment side panel modules (internal compartmentalisation)

With or without duct, for direct attachment to the functional space side panel modules.



## Features

Model No.	SV 9673.660
Design	Without duct
Product description	For direct attachment to the compartment side panel modules for internal compartmentalisation. Universal interior installation with switchgear and controlgear. Creation of additional mounting levels. In combination with compartment dividers and side panel modules, internal compartmentalisation in accordance with Form 2, 3 or 4 is possible.
Material	Sheet steel, 2 mm
Surface finish	Zinc-plated
Supply includes	Angle brackets and assembly parts
For compartment height	1.000 mm
Dimensions	Width: 502 mm Height: 993 mm
To fit	Width: = 600 mm
Packs of	1 pc(s).
Net weight	11,625 kg
Gross weight	12,237 kg

# Features

---

Customs tariff number	94039910
ETIM 9	EC002525
ECLASS 8.0	27400613
Product description	SV Partial mounting plate, WH: 502x993 mm, for TS (B: 600 mm)

---