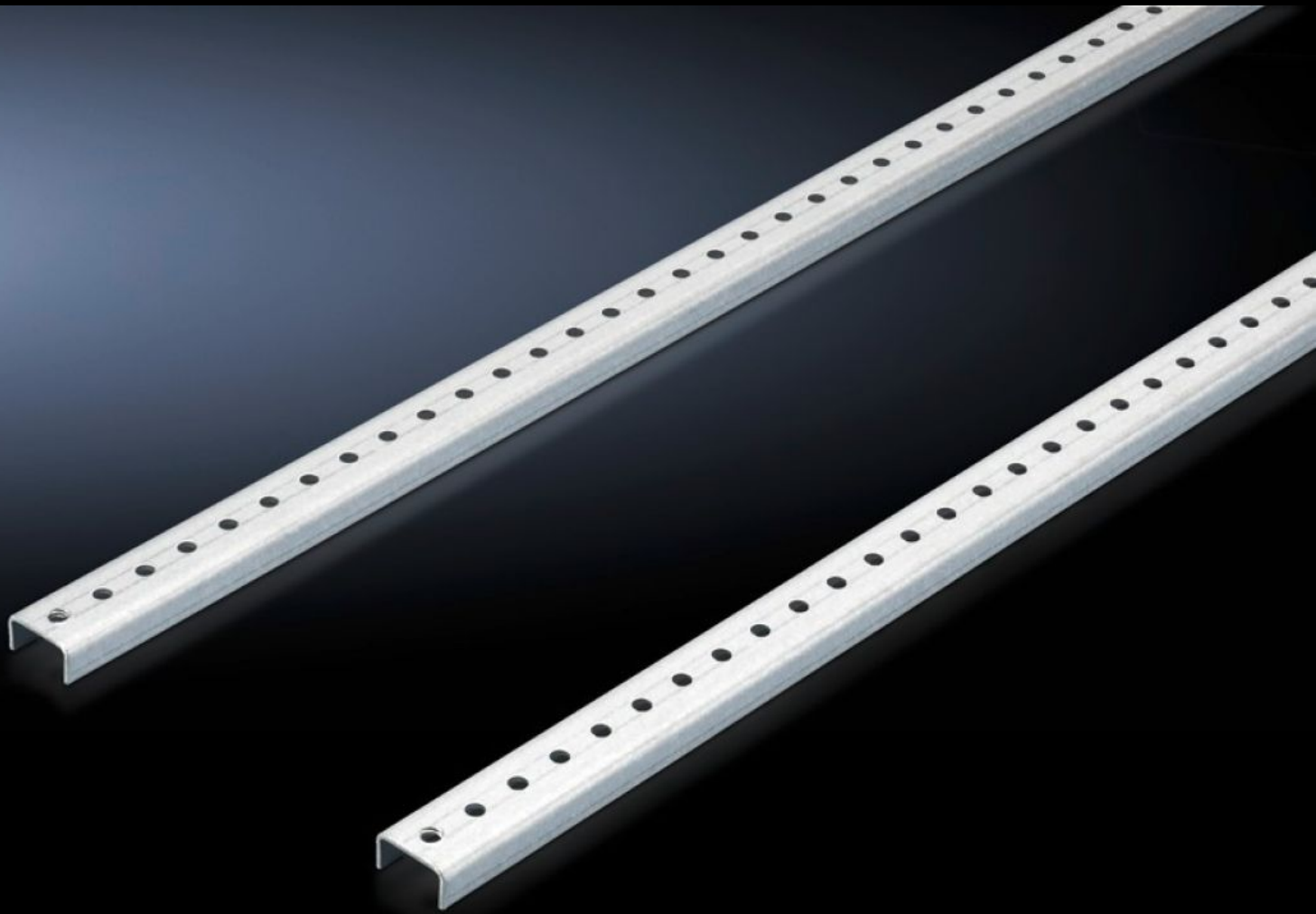


Rittal – The System.

Faster – better – everywhere.



SV 9674.381 Punched rail

State: 04/04/2026 (Source: rittal.com/rs-sr)

ENCLOSURES

POWER DISTRIBUTION

CLIMATE CONTROL

IT INFRASTRUCTURE

SOFTWARE & SERVICES

FRIEDHELM LOH GROUP



SV 9674.381 - Punched rail Set for cover, distribution busbar (Jean Müller fuse-switch disconnecter section)

Required for mounting the distribution busbar cover.



Features

Model No.	SV 9674.381
Product description	Required for mounting the distribution busbar cover.
Material	Sheet steel, zinc-plated
Supply includes	Set consisting of 2 punched rails Assembly parts
Note	For 1 fuse-switch disconnecter section, 1 pack of punched rails is required.
To fit	Height: = 2,000 mm = 2,200 mm
Packs of	1 pc(s).
Net weight	2,522 kg
Gross weight	2,722 kg
PCF per pack (cradle-to-gate)	9.5 kg CO2 eq (Cat B)
Note on PCF category	Category B: PCF value (cradle-to-gate) based on the product weight, approximately calculated and self-declared
Customs tariff number	73269098
ETIM 9	EC002270
ECLASS 8.0	27400613

Features

Product description

SV Punched rail, for cover distribution busbar, fuse-switch
disconnecter section, (Jean Müller Sasil)