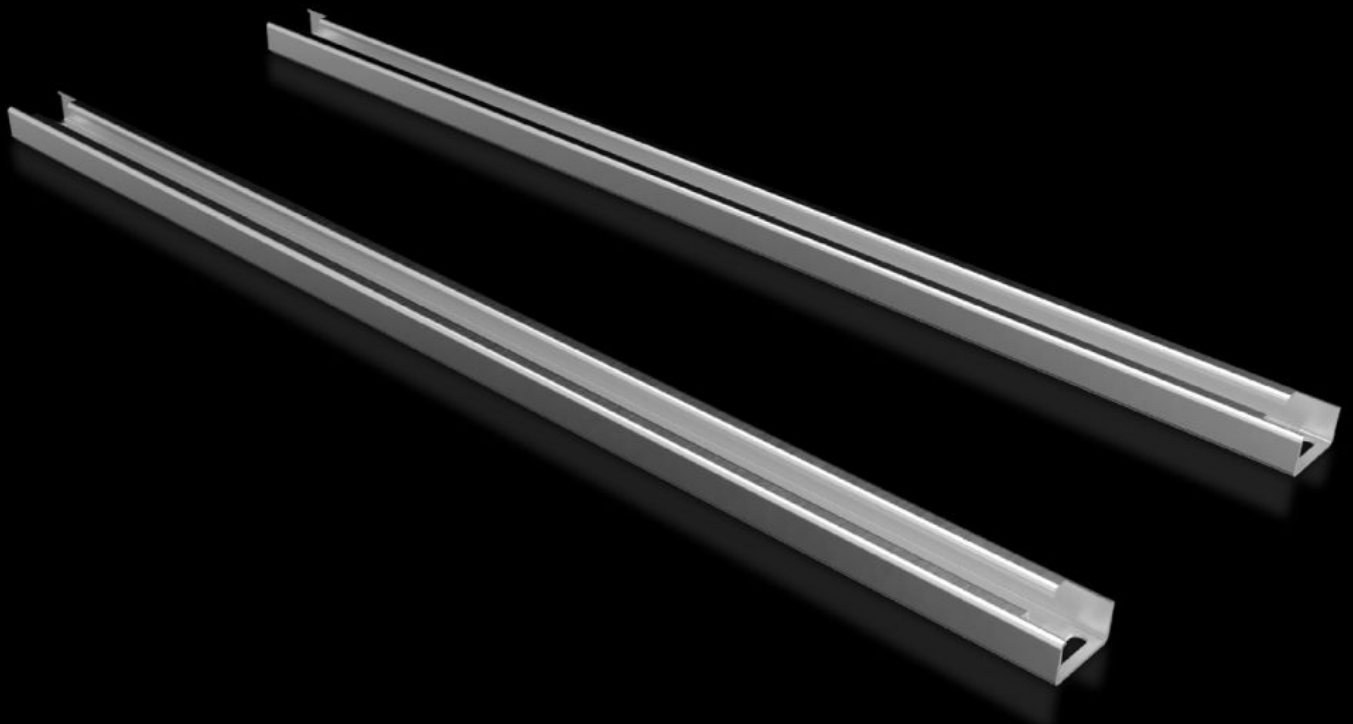


Rittal – The System.

Faster – better – everywhere.



SV 9683.310

Air circuit-breaker support bar

State: 04/05/2026 (Source: rittal.com/rs-sr)

ENCLOSURES

POWER DISTRIBUTION

CLIMATE CONTROL

IT INFRASTRUCTURE

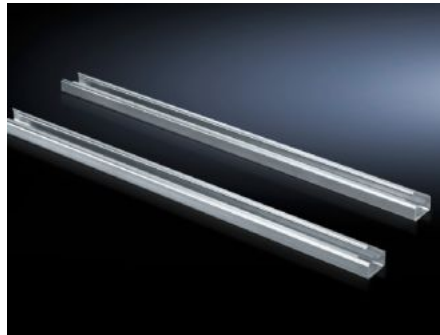
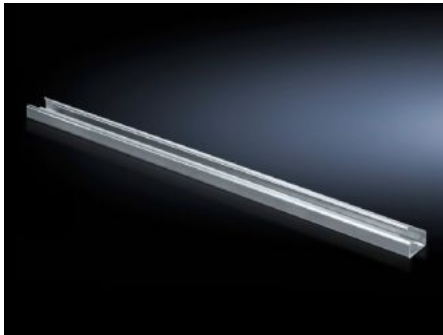
SOFTWARE & SERVICES

FRIEDHELM LOH GROUP



SV 9683.310 - Air circuit-breaker support bar

For the configuration of air circuit-breakers (ACB) in compartments.



Features

Model No.	SV 9683.310
Product description	For the configuration of air circuit-breakers (ACB) in compartments.
Material	Sheet steel, 2.5 mm
Surface finish	Zinc-plated
Supply includes	Assembly parts
Length	896 mm
Dimensions	Length: 896 mm
To fit	Width: = 1,000 mm
Packs of	2 pc(s).
Net weight	4,702 kg
Gross weight	4,92 kg
PCF per pack (cradle-to-gate)	18.7 kg CO2 eq (Cat B)
Note on PCF category	Category B: PCF value (cradle-to-gate) based on the product weight, approximately calculated and self-declared
Customs tariff number	73269098
ETIM 9	EC002936
ECLASS 8.0	27400613
Product description	SV air circuit-breaker support rail for VX (width 1000 mm)

Approvals

Explanations

Declaration of conformity UK