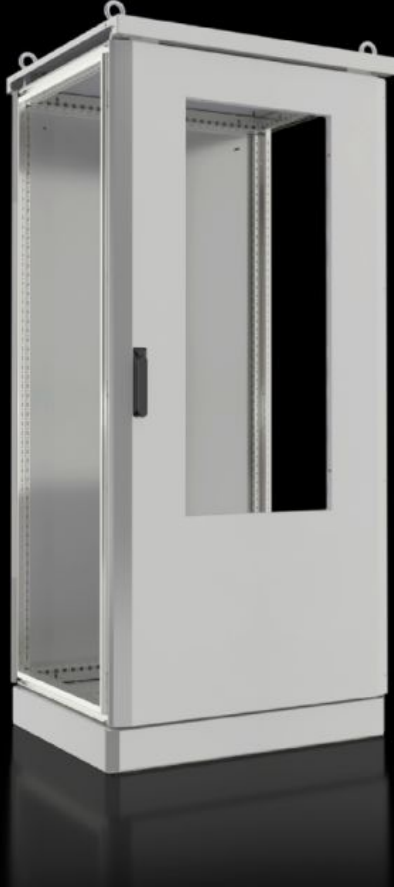


Rittal – The System.

Faster – better – everywhere.



CS 9782.866

CS Toptec, bayable

State: 12/03/2026 (Source: rittal.com/rs-sr)

ENCLOSURES

POWER DISTRIBUTION

CLIMATE CONTROL

IT INFRASTRUCTURE

SOFTWARE & SERVICES

FRIEDHELM LOH GROUP



CS 9782.866 - CS Toptec, bayable

Bayable, twin-walled outdoor enclosure with 100 mm base/plinth, door, rear panel and seamlessly bayable weather canopy. The entire enclosure frame is available for efficient, flexible interior installation. The enclosure is prepared for installation of a wall-mounted Blue e+ outdoor cooling unit.



Features

Model No.	CS 9782.866
Design	for baying With cut-out for outdoor cooling units 1.5 kW
Material	Enclosure frame: Stainless steel 1.4301 (AISI 304) Enclosure panels and base/plinth trim: Aluminium, AlMg3 Rain canopy: Aluminium
Surface finish	Powder-coated UV-resistant pure polyester
Colour	RAL 7035
Supply includes	Bayable, twin-walled outdoor enclosure Enclosure frame with 25 mm system punchings in the roof and base frame plus vertical sections with two mounting levels Front door with door stay, swing lever handle and profile half-cylinder, lock BJ 20027 Rear panel Rain canopy Base/plinth with screw-fastened gland plates and screw-fastened trim panels front and rear

Features

Dimensions	Width: 800 mm Height: 1,600 mm Depth: 600 mm
Dimensions	Overall height: 1,745 mm Rain canopy height: 45 mm Height base/plinth: 100 mm
Number of doors	1
Lock	Lock version: 3-point locking Number of locks: 1 Lock insert: BJ20027
Gland plate	Size: 2 Qty.: 2
IP protection category to IEC 60529	IP 55
Protection category NEMA	NEMA 3R NEMA 12
IK Code	IK10
Note	All enclosure panels are doubled and earthed (external wall onto internal wall) When assembling a free-standing enclosure, bayable side panels for CS Toptec are required
Note on Model No.	A climate control unit or adaptor plate is required to seal the cut-out
Packs of	1 pc(s).
Net weight	70 kg
Gross weight	70,5 kg
Customs tariff number	94032080
ETIM 9	EC000261
ETIM 8	EC000261
ECLASS 8.0	27180101
Product description	CS TopTec, bayable, WxHxD: 800x1600x600 mm, with cut-out for outdoor climate control unit 1.5 kW

Approvals

Explanations

Declaration of conformity

Tender text

Outdoor enclosure Toptec, bayable

Toptec Outdoor Housing

Single door, double walled

With cut-out for Blue e+ outdoor cooling unit 3185330

or the use of filters / fans and bulkheading

to avoid air short circuits in the double wall.

Outdoor housing with 100 mm transport base/plinth and

Rain canopy projecting on all sides.

Rear wall and door completely doubled on the outside,

the complete TS 8 frame stands for the interior fittings

at your disposal.

Double-walled outdoor housing, completely pre-assembled

TS 8 frame with 25 mm system perforation in roof and

Base frame and vertical profiles with 2 fixing levels

Front door with door stop, lever handle and

Profile half cylinder, locking BJ20027

Rear panel

Rain cover

Base with bolted flange plates and

screwed front and rear panels

Door:

with 4-point lock and lever handle

with C83N profile half cylinder with lock BJ20027

Flat parts:

Roof, door, rear wall, floor panels

(2 flange plates, size: 340x150 mm)

included in delivery.

All flat parts doubled and earthed

(outer wall to inner wall).

Accessories: Side panels, Baying-Kit, AX gland plates

Adapter rail for VX compatibility, Swing frame VX

Material:

Housing frame: stainless steel 1.4301 (AISI 304)

Flat parts and plinth panels: Aluminium, AlMg3

Rain cover: aluminium

Surface finish:

Powder-coated

UV-resistant pure polyester

External surfaces in RAL 7035 structure Outdoor powder-coated.

Protection class according to IEC 60 529: IP 55

Impact protection according to IEC 62 262: IK10

Dimensions (W x H x D): 800x1600x600 mm