

Rittal – The System.

Faster – better – everywhere.



VX 8660.070

**Base/plinth trim panels, sides, for
VX base/plinth system, stainless
steel**

State: 2025-04-26 (Source: [rittal.com/se-sv](https://www.rittal.com/se-sv))

ENCLOSURES

POWER DISTRIBUTION

CLIMATE CONTROL

IT INFRASTRUCTURE

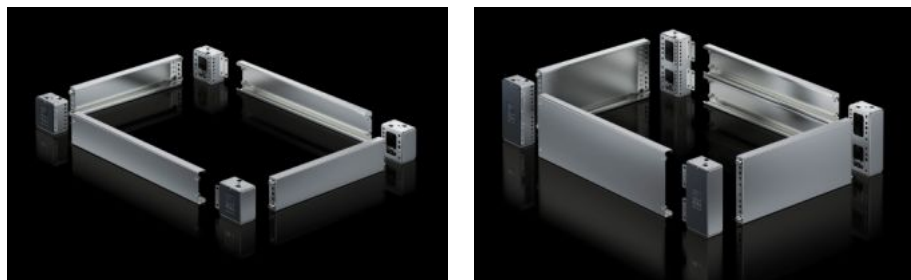
SOFTWARE & SERVICES

FRIEDHELM LOH GROUP



VX 8660.070 - Base/plinth trim panels, sides, for VX base/plinth system, stainless steel Nytt utförande

Stainless steel base/plinth trim panels are used in the depth to finish off a base/plinth unit at the sides.



Features

Art. nr.	VX 8660.070
Material	Rostfritt stål 1.4301 (AISI 304)
Ytbehandling	Streckslipat, korn 400
Leveransens omfattning	Inkl. fastsättningsmaterial
Observera:	Components from the 1st generation base/plinth system cannot be combined with components from the 2nd generation base/plinth system
Dimension	Höjd: 100 mm
Passar för	Skåptyp: VX VX SE TS PC Djup: = 400 mm
Typklassning motsvarande UL 50E	Typ 1 Type 3R Type 4 Type 4X Typ 12
Förpackningsenhet	2 st.
Nettovikt	1.31

Features

Bruttovikt	1.314
Tullvarukod	94039910
EAN	4028177037793
ETIM 9	EC000721
ETIM 8	EC000721
ECLASS 8.0	27182003

Approvals

Approvals	UL + C-UL - FTTA
-----------	------------------