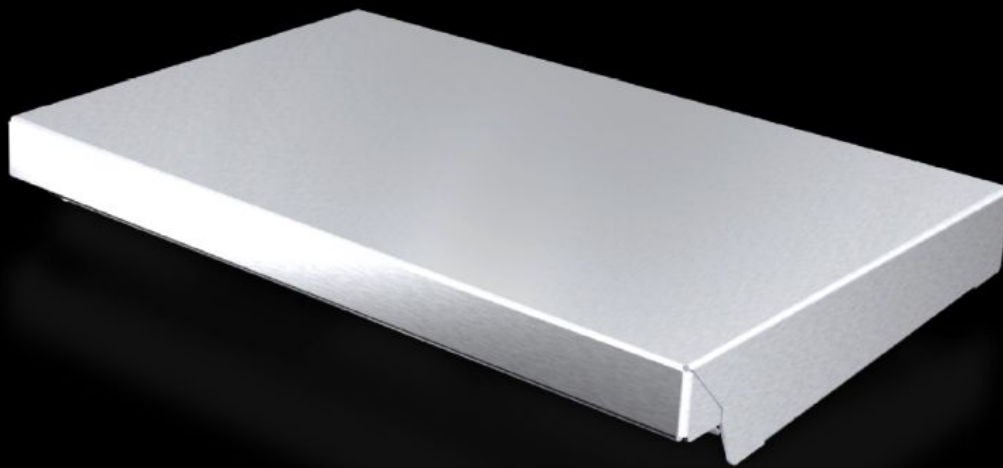


# Rittal – The System.

Faster – better – everywhere.



## AX 2361.010 Protective roof

State: 23/05/2026 (Source: [rittal.com/sg-en](http://rittal.com/sg-en))

ENCLOSURES

POWER DISTRIBUTION

CLIMATE CONTROL

IT INFRASTRUCTURE

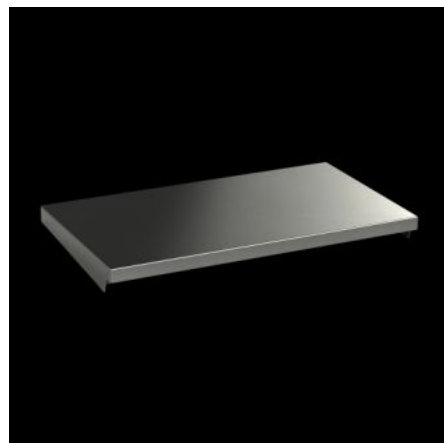
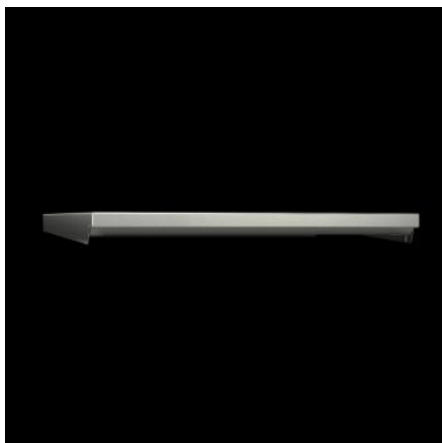
SOFTWARE & SERVICES

FRIEDHELM LOH GROUP



# AX 2361.010 - Protective roof for AX

The sloping protective roof reliably protects the enclosure from standing moisture and other soiling from above.



## Features

|                       |  |
|-----------------------|--|
| Model No.             | AX 2361.010  |
| Product description   | The sloping protective roof reliably protects the enclosure from standing moisture and other soiling from above. |
| Material              | Stainless steel 1.4301 (AISI 304)  |
| Surface finish        | Brushed, grain 240   |
| Supply includes       | Assembly parts   |
| Installation options  | May also be screw-fastened for dynamic loads   |
| Dimensions            | Height: 37 mm  |
| Type rating to UL 50E | Type 1<br>Type 3R<br>Type 4<br>Type 4X<br>Type 12  |
| To fit                | Enclosure type: AX<br>Width: = 300 mm<br>Depth: = 210 mm   |
| Packs of              | 1 pc(s).   |
| Net weight            | 1.3 kg   |

# Features

---

|                       |   |
|-----------------------|---|
| Gross weight          | 1.458 kg  |
| Customs tariff number | 94039910  |
| ETIM 9                | EC000744  |
| ETIM 8                | EC000744  |
| ECLASS 8.0            | 27182405  |
| Product description   | AX Protective roof, for WD: 300x210 mm, stainless steel |

# Approvals

---

|           |                  |
|-----------|------------------|
| Approvals | UL + C-UL - FTTA |
|-----------|------------------|