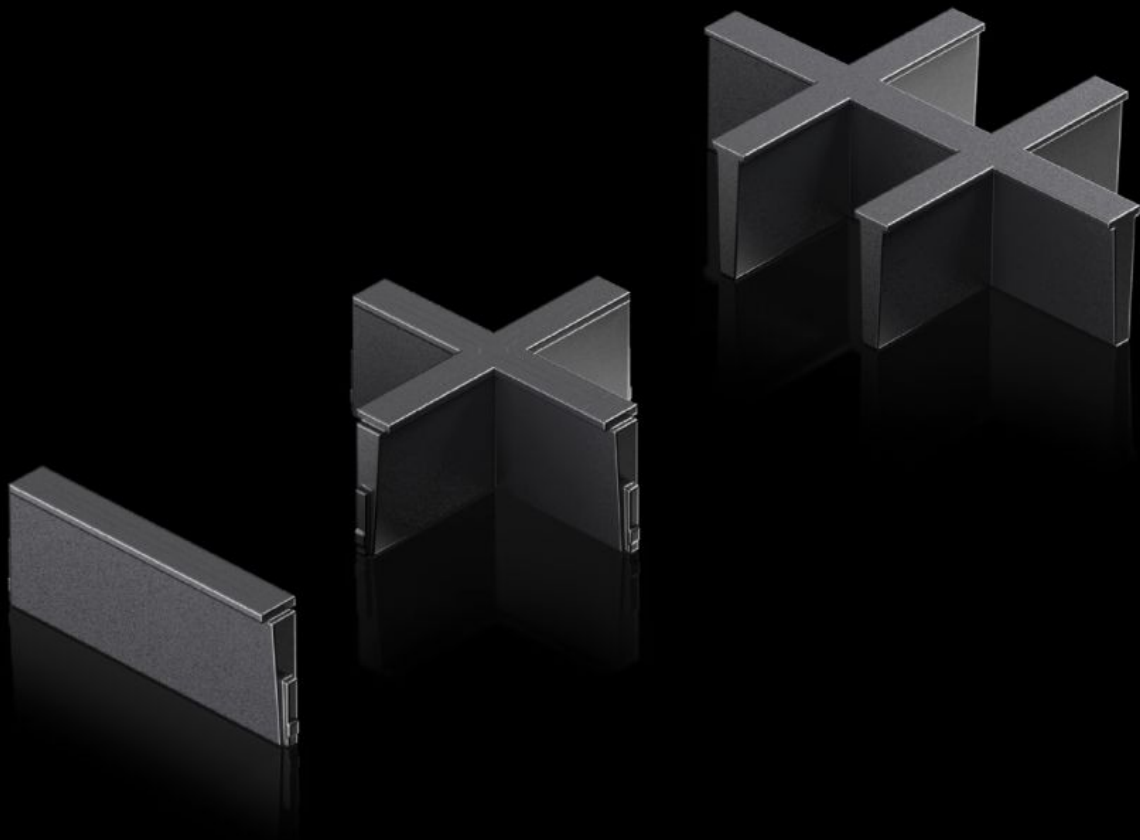


Rittal – The System.

Faster – better – everywhere.



AX 2582.200

Inlay

State: 02/04/2026 (Source: rittal.com/sg-en)

ENCLOSURES

POWER DISTRIBUTION

CLIMATE CONTROL

IT INFRASTRUCTURE

SOFTWARE & SERVICES

FRIEDHELM LOH GROUP



AX 2582.200 - Inlay For plastic gland plate, modular and sealing frame, modular

Individual inserts to subdivide the cut-outs in the modular plastic gland plate and the modular sealing frame.

Features

| | |
|-----------------------|--|
| Model No. | AX 2582.200 |
| Design | 2 slots |
| Product description | Individual inserts to subdivide the cut-outs in the modular plastic gland plate and the modular sealing frame. |
| Material | Plastic |
| Colour | Black |
| Packs of | 5 pc(s). |
| Net weight | 0.015 kg |
| Gross weight | 0.023 kg |
| Customs tariff number | 40091200 |
| ETIM 9 | EC000211 |
| ETIM 8 | EC000211 |
| ECLASS 8.0 | 27142421 |
| Product description | SZ Inlay, for cable entry, modular, design: 2 slots |

Approvals

| | |
|-----------|------------------------|
| Approvals | UR + C-UR (recognized) |
|-----------|------------------------|