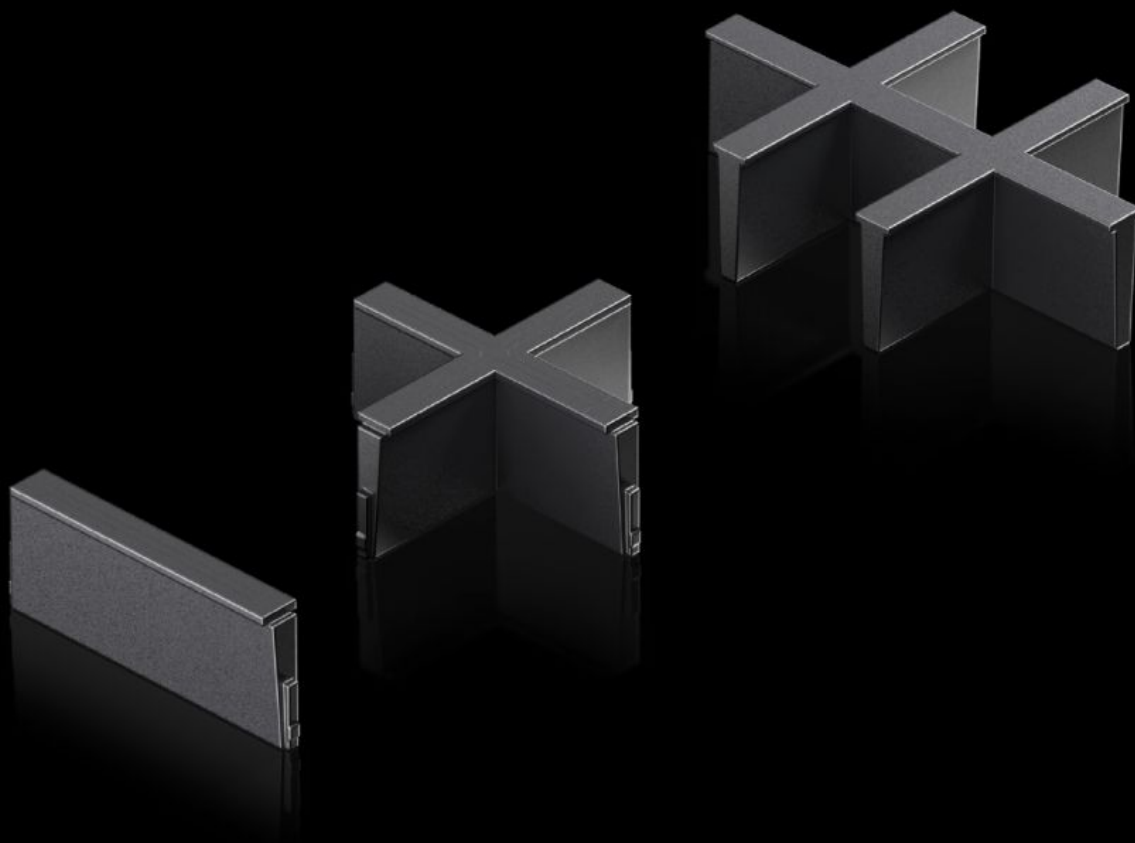


Rittal – The System.

Faster – better – everywhere.



AX 2582.400 Inlay

State: 24/08/2025 (Source: [rittal.com/sg-en](https://www.rittal.com/sg-en))

ENCLOSURES

POWER DISTRIBUTION

CLIMATE CONTROL

IT INFRASTRUCTURE

SOFTWARE & SERVICES

FRIEDHELM LOH GROUP



AX 2582.400 - Inlay For plastic gland plate, modular and sealing frame, modular

Individual inserts to subdivide the cut-outs in the modular plastic gland plate and the modular sealing frame.

Features

Model No.	AX 2582.400
Design	4 slots
Product description	Individual inserts to subdivide the cut-outs in the modular plastic gland plate and the modular sealing frame.
Material	Plastic
Colour	Black
Packs of	5 pc(s).
Net weight	0.005
Gross weight	0.029
Customs tariff number	40091200
EAN	4028177939882
ETIM 9	EC000211
ETIM 8	EC000211
ECLASS 8.0	27142421

Approvals

Approvals	UR + C-UR (recognized)
-----------	------------------------