

# Rittal – The System.

Faster – better – everywhere.



## AX 2830.320

## Base/plinth components, sides

State: 29/08/2025 (Source: [rittal.com/sg-en](http://rittal.com/sg-en))

ENCLOSURES

POWER DISTRIBUTION

CLIMATE CONTROL

IT INFRASTRUCTURE

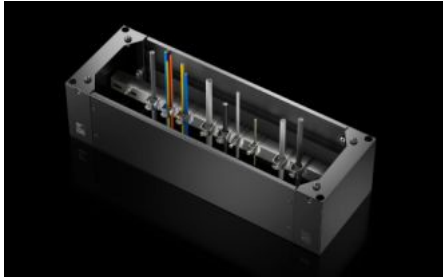
SOFTWARE & SERVICES

FRIEDHELM LOH GROUP



# AX 2830.320 - Base/plinth components, sides for AX

Base/plinth component for mounting in the depth and for stabilising the base/plinth.



## Features

Model No.	AX 2830.320
Design	New version
Product description	Base/plinth component for mounting in the depth and for stabilising the base/plinth.
Material	Base/plinth components: Sheet steel Cover caps: Plastic
Colour	RAL 9005
Supply includes	2 base/plinth components 2 cover caps Assembly parts
Note	Components from the 1st generation base/plinth system cannot be combined with components from the 2nd generation base/plinth system
Dimensions	Height: 200 mm
To fit	Enclosure type: AX Depth: = 300 mm
Packs of	2 pc(s).
Net weight	3.208
Gross weight	3.209
Customs tariff number	94039910
EAN	4028177037663

# Features

ETIM 9	EC000721
ETIM 8	EC000721
ECLASS 8.0	27182003

# Approvals

Approvals	UL + C-UL - FTTA
-----------	------------------