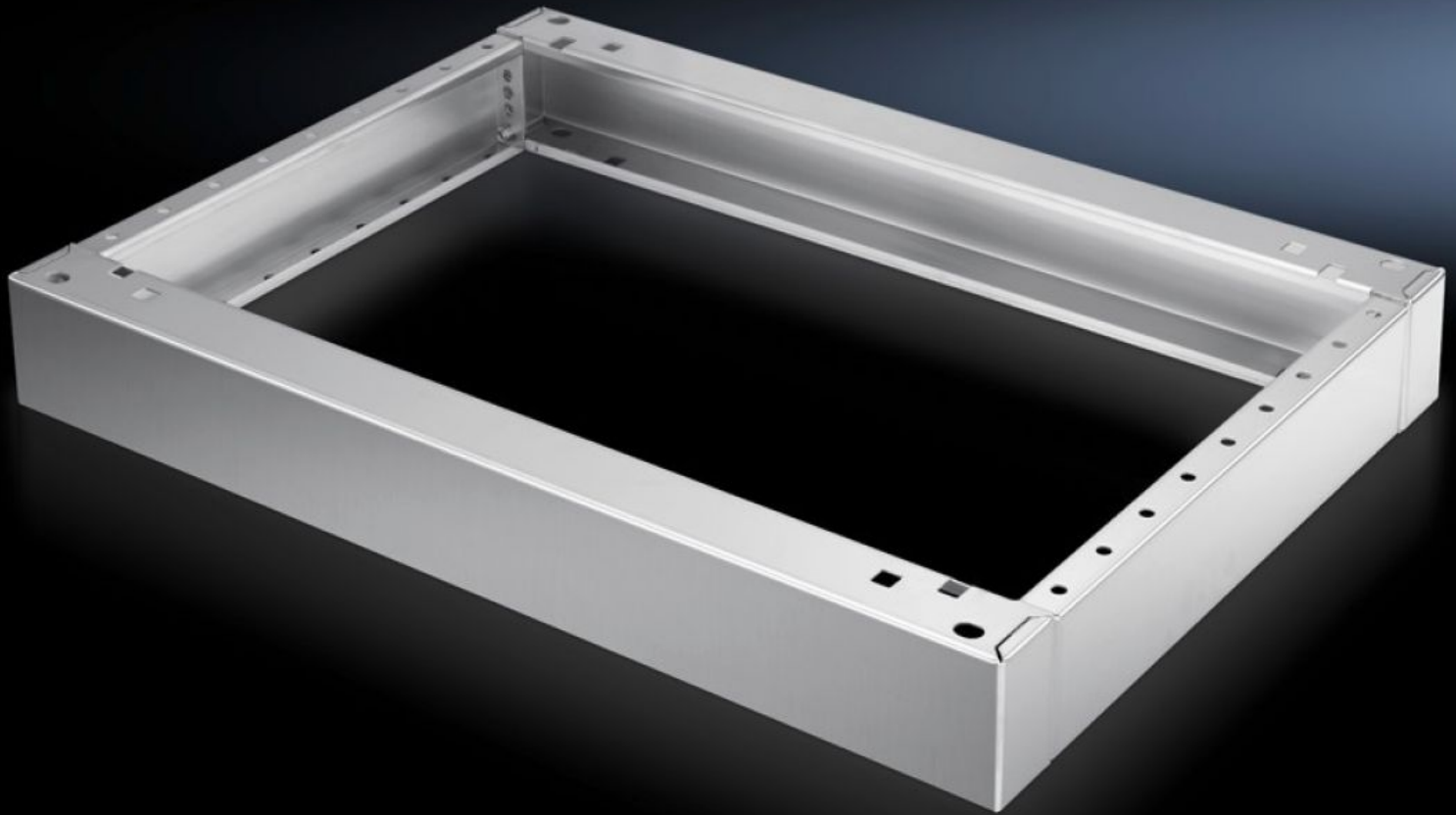


Rittal – The System.

Faster – better – everywhere.



SO 2870.000

Base/plinth, complete

State: 26/05/2026 (Source: rittal.com/sg-en)

ENCLOSURES

POWER DISTRIBUTION

CLIMATE CONTROL

IT INFRASTRUCTURE

SOFTWARE & SERVICES

FRIEDHELM LOH GROUP



SO 2870.000 - Base/plinth, complete Stainless steel, for one-piece consoles

Where necessary, 2 base/plinths may be installed one above the other.

Features

Model No.	SO 2870.000
Product description	Where necessary, 2 base/plinths may be installed one above the other.
Material	Stainless steel 1.4301 (AISI 304)
Surface finish	Brushed
Supply includes	2 trim panels front/rear 2 trim panels, side Assembly parts for mounting on the enclosure
Dimensions	Height: 100 mm
To fit	Enclosure type: One-piece console, stainless steel Width: = 1,200 mm Depth: = 400 mm
Packs of	1 pc(s).
Net weight	10.014 kg
Gross weight	10.541 kg
Customs tariff number	94039910
ETIM 9	EC000721
ETIM 8	EC000721
ECLASS 8.0	27182003
Product description	TP Base/plinth, complete, for one-piece console, WHD: 1200x100x400 mm, Stainless steel 1.4301