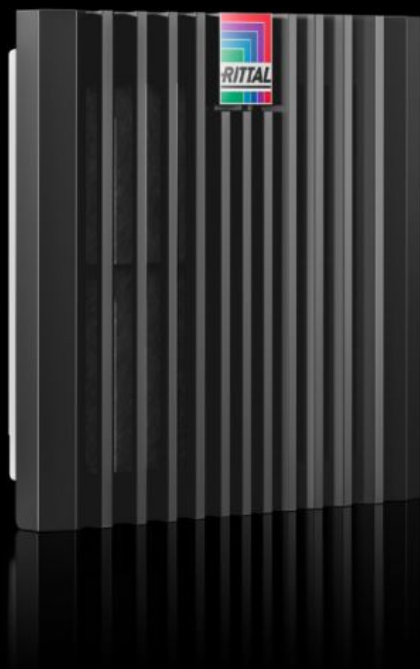
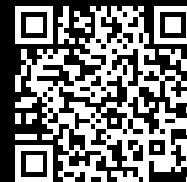


Rittal – The System.

Faster – better – everywhere.



SK 3239.308 Blue e+ outlet filter

State: 20/08/2025 (Source: [rittal.com/sg-en](https://www.rittal.com/sg-en))

ENCLOSURES

POWER DISTRIBUTION

CLIMATE CONTROL

IT INFRASTRUCTURE

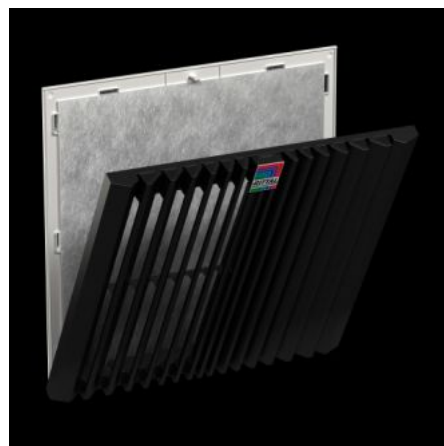
SOFTWARE & SERVICES

FRIEDHELM LOH GROUP



SK 3239.308 - Blue e+ outlet filter

The outlet filter is used in conjunction with the corresponding fan-and-filter unit to dissipate heat loss from enclosures, ventilate the enclosure and protect temperature-sensitive components. This is achieved through the direct infeed of ambient air, the temperature of which must be lower than the permissible internal temperature of the enclosure.



Features

Model No.	SK 3239.308
Design	wall-mounted
Benefits	Easy filter changes, thanks to a new opening mechanism on the louvred grille Faster installation on the enclosure with optimised detent hooks Tool-free assembly
Material	Plastic
Colour	RAL 9005
Supply includes	Outlet filter Pleated filter
Mounting cut-out	Cut-out width: 177 mm Cut-out height: 177 mm
To fit Model No.	SK 3239.7xx
Dimensions	Width: 204 mm Height: 204 mm Depth: 45.8 mm

Features

Protection category NEMA	Type 12 with chopped-fibre filter/pleated filter Type 3, 3R, 4, 4X with chopped-fibre filter/pleated filter and hose-proof hood
IP protection category to IEC 60529	IP 54 with chopped-fibre filter/pleated filter IP 55 with pleated filter and absorber mat IP 56 with chopped-fibre filter/pleated filter and hose-proof hood
Packs of	1 pc(s).
Net weight	0.37
Gross weight	0.47
Customs tariff number	39269097
EAN	4028177998384
ETIM 9	EC002513
ETIM 8	EC002513
ECLASS 8.0	27180706

Approvals

Approvals	UL + C-UL - FTTA UR + C-UR (recognized)
-----------	--------------------------------------------