

# Rittal – The System.

Faster – better – everywhere.



## SK 3243.308 Blue e+ outlet filter

State: 11/04/2026 (Source: [rittal.com/sg-en](http://rittal.com/sg-en))

ENCLOSURES

POWER DISTRIBUTION

CLIMATE CONTROL

IT INFRASTRUCTURE

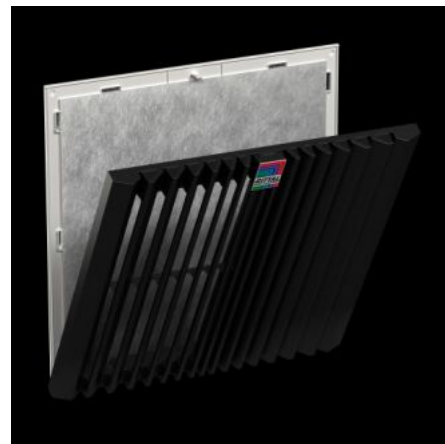
SOFTWARE & SERVICES

FRIEDHELM LOH GROUP



# SK 3243.308 - Blue e+ outlet filter

The outlet filter is used in conjunction with the corresponding fan-and-filter unit to dissipate heat loss from enclosures, ventilate the enclosure and protect temperature-sensitive components. This is achieved through the direct infeed of ambient air, the temperature of which must be lower than the permissible internal temperature of the enclosure.



## Features

Model No.	SK 3243.308
Design	wall-mounted
Benefits	Easy filter changes, thanks to a new opening mechanism on the louvred grille Faster installation on the enclosure with optimised detent hooks Tool-free assembly
Material	Plastic
Colour	RAL 9005
Supply includes	Outlet filter Pleated filter
Mounting cut-out	Cut-out width: 292 mm Cut-out height: 292 mm
To fit Model No.	SK 3243.7xx/3243.9xx/3244.7xx/3244.9xx/3245.9xx
Dimensions	Width: 323 mm Height: 323 mm Depth: 44.7 mm

# Features

---

Protection category NEMA	Type 12 with chopped-fibre filter/pleated filter Type 3, 3R, 4, 4X with chopped-fibre filter/pleated filter and hose-proof hood
IP protection category to IEC 60529	IP 54 with chopped-fibre filter/pleated filter IP 55 with pleated filter and absorber mat IP 56 with chopped-fibre filter/pleated filter and hose-proof hood
Packs of	1 pc(s).
Net weight	0.94 kg
Gross weight	0.95 kg
Customs tariff number	39269097
ETIM 9	EC002513
ETIM 8	EC002513
ECLASS 8.0	27180706
Product description	SK Blue e+ outlet filter, for fan-and-filter units 3243.7xx/3243.9xx/3244.7xx/3244.9xx/3245.9xx, WxH 323 x 323 mm, RAL 9005

# Approvals

---

Approvals	UL + C-UL - FTTA UR + C-UR (recognized)
-----------	--