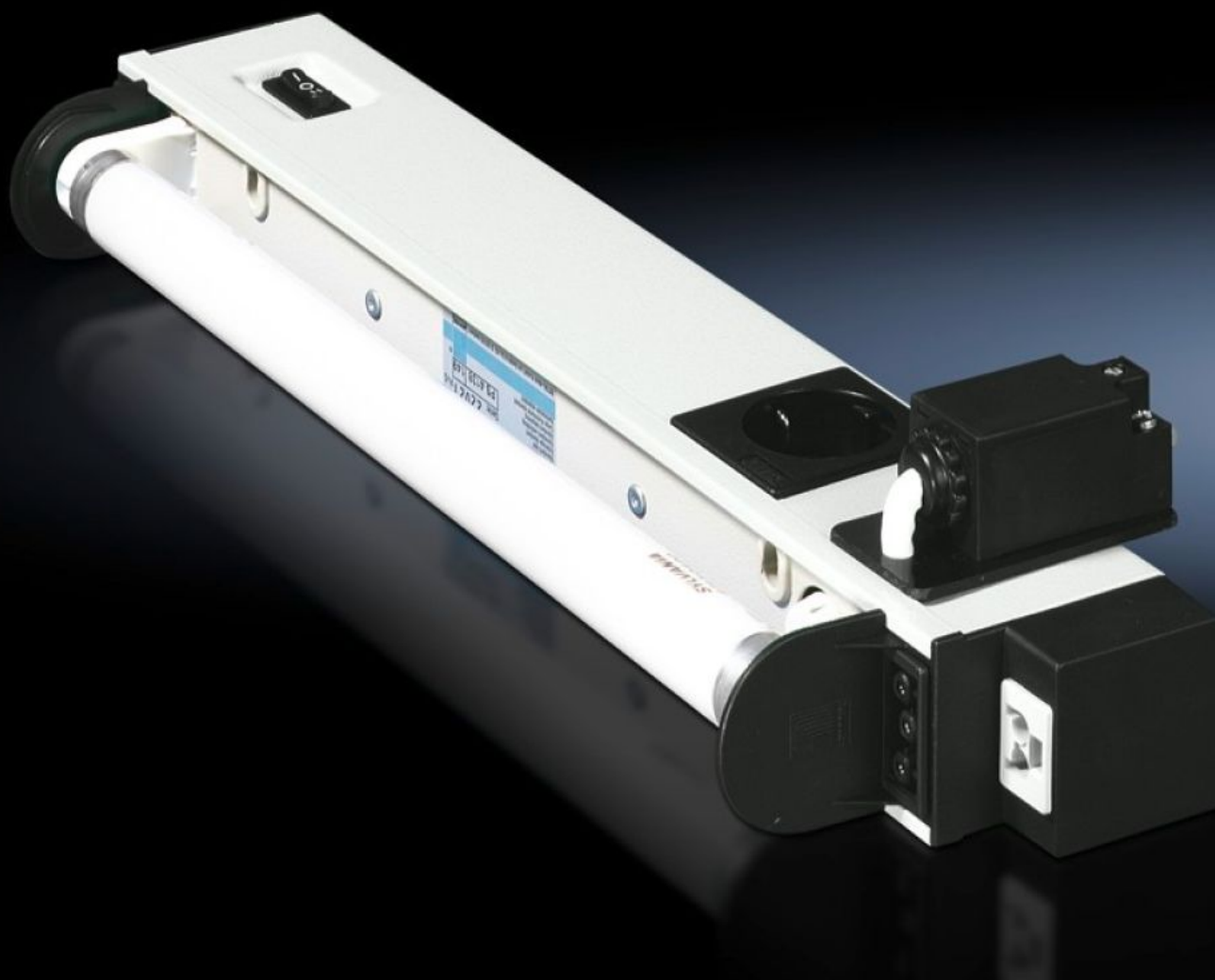


Rittal – The System.

Faster – better – everywhere.



SZ 4138.190 Standard light

State: 11/05/2025 (Source: rittal.com/sg-en)

ENCLOSURES

POWER DISTRIBUTION

CLIMATE CONTROL

IT INFRASTRUCTURE

SOFTWARE & SERVICES

FRIEDHELM LOH GROUP



SZ 4138.190 - Standard light

Supply voltage: 120 V AC 60 Hz, 230 V AC 50 Hz

Features

Model No.	SZ 4138.190
Design	with door-operated switch
Supply includes	Standard light Light Assembly parts Integral door-operated switch
Power consumption	18 W
Ballast	Magnetic ballast
Connection options	Power supply via connectors Through-wiring (creating rows of lights)
Integral door-operated switch	Yes
Light	Fluorescent lamp, base G13
Protection class	I (PE conductor)
Switch (type)	Integral on/off/door-operated switch
Light – installation type	Screw-fastening
Rated impulse withstand voltage, phase to earth	1500 V AC
Rated impulse withstand voltage, phase to phase	500 V AC
Rated insulation voltage	500 V DC/1s
Installation options	TS horizontal section of the roof frame: direct TS, SE vertical section: with TS adaptor bracket SE sections at the front and rear of the roof frame: with TS adaptor bracket SE extrusions at the side of the roof frame: direct

Features

Dimensions	Width: 682 mm Height: 117 mm Depth: 50 mm
Operating temperature range	-15 °C...45 °C
Sockets	D, earthing-pin (type F, CEE 7/4)
Storage temperature range	-20 °C...70 °C
Rated operating voltage	230 V, 1~, 50 Hz
Socket version	D, earthing-pin (type F, CEE 7/4)
Packs of	1 pc(s).
Net weight	2.02
Gross weight	2.22
Customs tariff number	94054990
EAN	4028177320727
ECLASS 8.0	27189241

Approvals

Explanations	Declaration of conformity Declaration of conformity UK
--------------	---