

Rittal – The System.

Faster – better – everywhere.



SZ 4155.110 Universal light

State: 22/08/2025 (Source: rittal.com/sg-en)

ENCLOSURES

POWER DISTRIBUTION

CLIMATE CONTROL

IT INFRASTRUCTURE

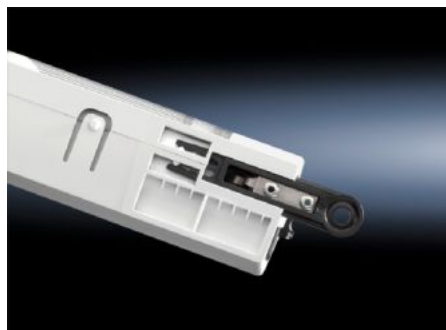
SOFTWARE & SERVICES

FRIEDHELM LOH GROUP



SZ 4155.110 - Universal light with integral motion detector

Enclosure light with insulated plastic housing, motion detector and voltage supply 110 - 240 V AC 50/60 Hz.



Features

Model No.	SZ 4155.110
Product description	Compact fluorescent tube 18 W with high luminosity.
Benefits	Simple, fast assembly
Material	Plastic
Supply includes	Universal light Integral motion detector Light Light cover Assembly parts
Power consumption	18 W
Ballast	Wide-range electronic ballast
Connection options	Power supply via connectors Through-wiring (creating rows of lights)
Integrated motion sensor	Yes
Light	Compact fluorescent lamp, base 2G11
Protection class	I (PE conductor)
Switch (type)	Integral, on/off/motion detector mode
Light cover	Yes

Features

Light – installation type	Screw-fastening
Rated impulse withstand voltage, phase to phase	2500 V AC
Rated insulation voltage	250 V AC
Installation options	TS horizontal section of the roof frame: direct TS, SE vertical section: with TS adaptor bracket SE sections at the front and rear of the roof frame: with TS adaptor bracket SE extrusions at the side of the roof frame: direct AE, CM, TP: with universal bracket AE: with rail for interior installation
Dimensions	Width: 345 mm Height: 95 mm Depth: 55 mm
Operating temperature range	-15 °C...45 °C
Sockets	1 x D, earthing-pin (type F, CEE 7/3)
Storage temperature range	-20 °C...70 °C
Rated operating voltage	110 V - 240 V, 1~, 50 Hz/60 Hz
Socket version	D, earthing-pin (type F, CEE 7/3)
Packs of	1 pc(s).
Net weight	0.714
Gross weight	0.92
Customs tariff number	94054990
EAN	4028177679832
ECLASS 8.0	27189241

Approvals

Explanations	Declaration of conformity Declaration of conformity UK
--------------	---